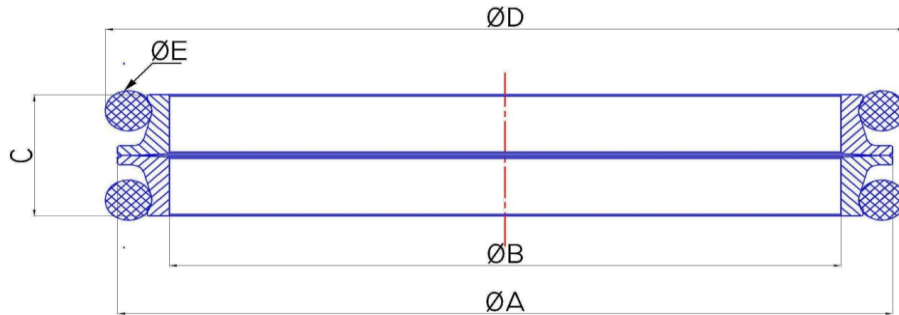
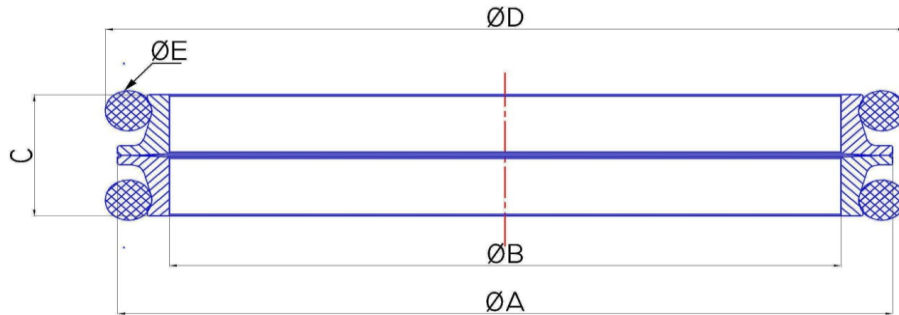


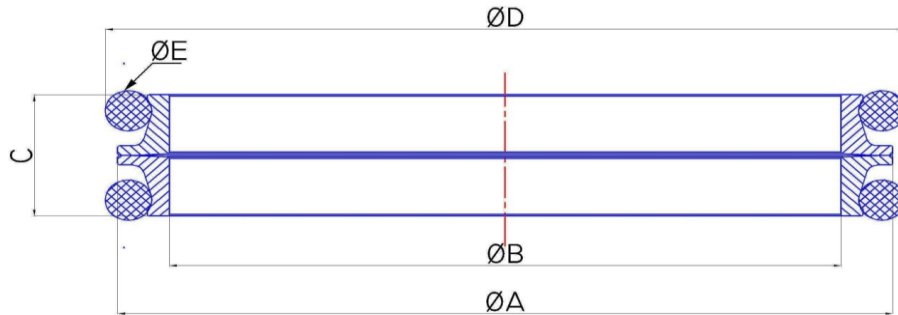
Sr. No.	REF. SAP PART NO.	SEAL MATERIAL	Ø A (OD)	Ø B (ID)	C (TOTAL METAL SEAL WIDTH)	Ø D (AFTER FITTMENT)
1	SAPF100450034014NB60	F1	45	34	14	47.6
2	SAPF100500039014NB60	F1	50	39	14	52
3	SAPS100500039014FP60	S1	50	39	14	52
4	SAPF100510038021NB60	F1	51	38	21	53.7
5	SAPC200510038021NB60	C2	51	38	21	53.7
6	SAPC200510038021FP60	C2	51	38	21	53.7
7	SAPF100580045021NB60	F1	58	45	21	62
8	SAPF100580432024NB60	F1	58	43.5	24	62.2
9	SAPF100580048144NB60	F1	58	48	14.4	59.9
10	SAPF100580042126NB60 VERSION 2	F1	58	48	7.2 (SINGLE WIDTH)	59.9
	SAPF100580042126NB60 VERSION 2	F1	58	42	5.45 (SINGLE WIDTH)	-
11	SAPF100580048144SI60	F1	58	48	14.4	59.9
12	SAPS100580048144FP60	S1	58	48	14.4	59.9
13	SAPF1L00590042020NB60	F1	59	42	20	65
14	SAPF100590045020NB60	F1	59	45	20	61.9
15	SAPF100590046020NB60	F1	59	46	20	61.6
16	SAPC100590046020NB60	C1	59	46	20	62.5
17	SAPC200590046020FP60	C2	59	46	20	62.5
18	SAPF100620048025NB60	F1	62	48	25	68
19	SAPF1L00620047020NB60	F1	62	47	20	70
20	SAPF1L00650505020NB60	F1	65	50.5	20	76.2
21	SAPF100650051023NB60	F1	65	51	23	68.2
22	SAPF100700555022NB60	F1	70	55.5	22	74.1
23	SAPC100700555022NB60	C1	70	55.5	22	74.1
24	SAPC100700555022FP60	C1	70	55.5	22	74.1
25	SAPC200700555022FP60	C2	70	55.5	22	74.1
26	SAPF100700056025NB60	F1	70	56	25	76
27	SAPF100700056025SI60	F1	70	56	25	76
28	SAPC100730602020NB60	C1	73	60.2	20	76.5
29	SAPC100730602020NB60 VERSION 2	C1	73	60.2	10 (SINGLE WIDTH)	76.5
	SAPC100730602020NB60 VERSION 2	C1	73	60.2	6 (SINGLE WIDTH)	-
30	SAPC200730602020FP60	C2	73	60.2	20	76.5



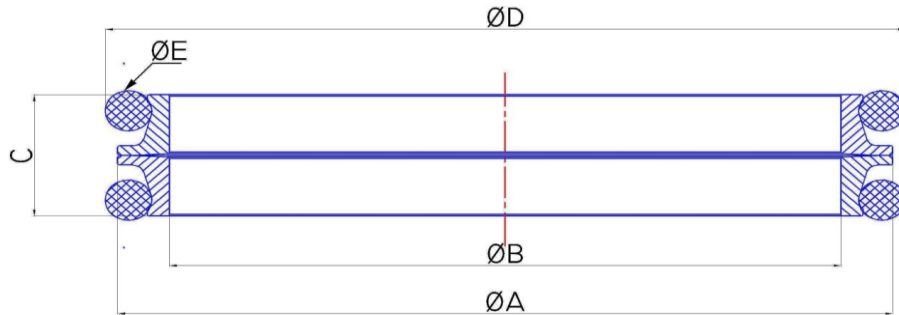
Sr. No.	REF. SAP PART NO.	SEAL MATERIAL	Ø A (OD)	Ø B (ID)	C (TOTAL METAL SEAL WIDTH)	Ø D (AFTER FITMENT)
31	SAPF100730618174NB60	F1	73	61.8	17.4	76.1
32	SAPF1L00730054022NB60	F1	73	54	22	80
33	SAPC100730615018NB60	C1	73	61.5	18	75.8
34	SAPF100740057027NB60	F1	74	57	27	79.4
35	SAPF100740060206NB60	F1	74	60	20.6	78.4
36	SAPF100750058027NB60	F1	75	58	27	79.2
37	SAPC200750058026NB60 1F	C2	75	58	26	79.4
38	SAPF100760064176NB60	F1	76	64	17.6	78.8
39	SAPC200760064176NB60	C2	76	64	17.6	78.8
40	SAPC2L00760562021NB60	C2	76	56.2	21	82.55
41	SAPF100780064025NB60	F1	78	64	25	84.6
42	SAPF100780064025SI60	F1	78	64	25	84.6
43	SAPF1L00800586196NB60	F1	80	58.6	19.6	84
44	SAPF100800067020NB60	F1	80	67	20	83.4
45	SAPF100800067020SI60	F1	80	67	20	83.4
46	SAPC100800067020NB60	C1	80	67	20	83.4
47	SAPC500800067020FP60	C5	80	67	20	83.4
48	SAPC108050063026NB60	C1	80.5	63	26	84
49	SAPF1L00810635019NB60	F1	81	63.5	19	87.8
50	SAPF1L00810635019NB60 SD	F1	81	63.5	19	87.2
51	SAPC108250635032NB60	C1	82.5	63.5	32	87
52	SAPF108250635032NB60	F1	82.5	63.5	32	86.5
53	SAPC208250635032NB60	C2	82.5	63.5	32	87
54	SAPC100840071020NB60	C1	84	71	20	87.4
55	SAPC100840071020FP60	C1	84	71	20	87.4
56	SAPF100840071020NB60	F1	84	71	20	87.4
57	SAPF100840069024NB60	F1	84	69	24	89.6
58	SAPC1L08620067020	C1	86.2	67	20	-
59	SAPF1L08620067020NB60	F1	86.2	67	20	95.4
60	SAPS1L00860067020NB60 LT	S1	86	67	20	95.4
61	SAPF108650074022NB60	F1	86.5	74	22	91.4
62	SAPC108650675032NB60	C1	86.5	67.5	32	91.3



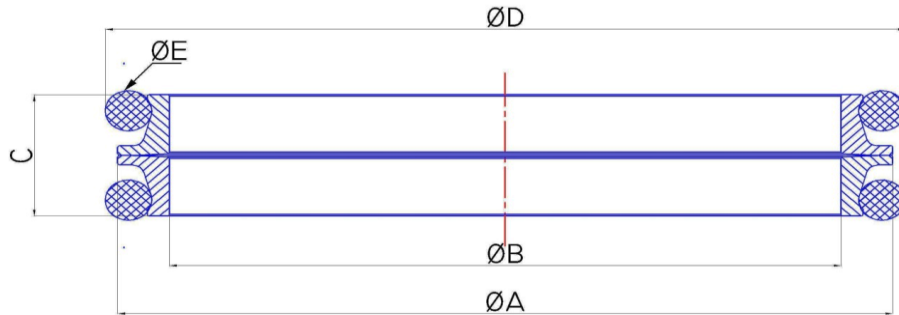
Sr. No.	REF. SAP PART NO.	SEAL MATERIAL	Ø A (OD)	Ø B (ID)	C (TOTAL METAL SEAL WIDTH)	Ø D (AFTER FITTMENT)
63	SAPC108650675032NB60 VERSION 2	C1	86.5	67.5	16 (SINGLE WIDTH)	91.3
	SAPC108650675032NB60 VERSION 2	C1	86.5	67.5	16 (SINGLE WIDTH)	-
64	SAPC200870074105	C2	87	74	21	-
65	SAPC200870074021NB70	C2	87	74	21	91.8
66	SAPF108760775136NB60	F1	87.6	77.5	13.6	91.07
67	SAPF108760775136SI60	F1	87.6	77.5	13.6	91.07
68	SAPF108850072256NB60 SD	F1	88.5	72	25.6	97.5
69	SAPF100890072244NB60	F1	89	72	24.4	92.85
70	SAPC100890685024NB60	C1	89	68.5	24	92.5
71	SAPC100890685024FP60	C1	89	68.5	24	92.5
72	SAPC200890685024	C2	89	68.5	24	-
73	SAPC100890072244FP60 VERSION 2	C1	89	72.5	24	93
	SAPC100890072244FP60 VERSION 2	C1	89	76	9.5 (SINGLE WIDTH)	91
74	SAPC200900070028	C2	90	70	28	-
75	SAPF100900070029NB60	F1	90	70	29	95.8
76	SAPF100900070029HN85	F1	90	70	29	95.8
77	SAPC1L00900076017NB60	C1	90	76	17	95
78	SAPF1L00900076017NB60	F1	90	76	17	95
79	SAPF100920073032NB60	F1	92	73	32	96.6
80	SAPC100920073032NB60	C1	92	73	32	96.5
81	SAPC100920073032NB60 LT	C1	92	73	32	96.5
82	SAPF100920775016NB60	F1	92	77.5	16	98.5
83	SAPF1L09280738020NB60	F1	92.8	73.8	20	102.2
84	SAPF109250801020NB60	F1	92.5	80.1	20	96.4
85	SAPF109250795020NB60	F1	92.5	79.5	20	96
86	SAPF109250795020NB60 CED	F1	92.5	79.5	20	96
87	SAPC109250795020NB60	C1	92.5	79.5	20	96
88	SAPC1L09280738020NB60	C1	92.8	73.8	20	102.2
89	SAPF1L0930074018	F1	93	74.5	18	-
90	SAPF109330749030NB60	F1	93.3	74.9	30	101
91	SAPC209330746029	C2	93.3	74.6	29	-
92	SAPF100940076030NB60	F1	94	76	30	101.4



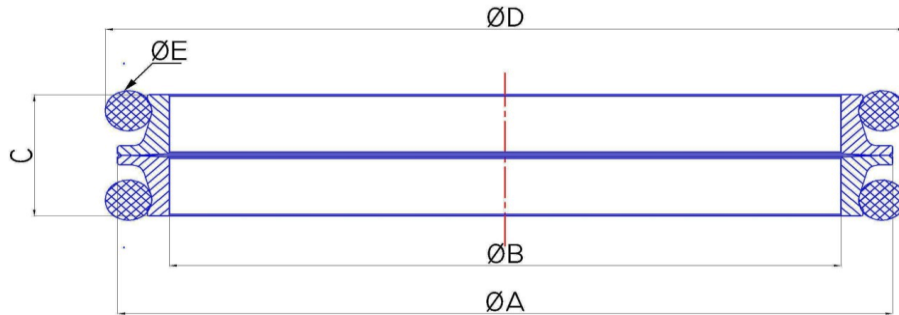
Sr. No.	REF. SAP PART NO.	SEAL MATERIAL	Ø A (OD)	Ø B (ID)	C (TOTAL METAL SEAL WIDTH)	Ø D (AFTER FITMENT)
93	SAPF100950045005 ADAPTER RING	F1	95	45	5	-
94	SAPF109650775032NB60	F1	96.5	77.5	32	99.8
95	SAPF1L00970077025NB60	F1	97	77	25	105
96	SAPF100970084205SI60	F1	97	84	20.5	101
97	SAPF100980081028NB60	F1	98	81	28	102.3
98	SAPC100980081028NB60	C1	98	81	28	102.3
99	SAPC200980081028FP60	C2	98	81	28	102.3
100	SAPF101000080030NB60	F1	100	80	30	105.3
101	SAPC201000080030	C2	100	80	30	-
102	SAPC201000080030NB60 F	C2	100	80	30	105.3
103	SAPC101020083024NB60 Version 2	C1	102	83	14 (SINGLE WIDTH)	105.5
	SAPC101020083024NB60 Version 2	C1	102	83	10 (SINGLE WIDTH)	112.9
104	SAPC101020083028NB60	C1	102	83	28	105.5
105	SAPC1L01040088019NB60	C1	104	88	19	113
106	SAPC2L01040088019NB60	C2	104	88	19	113
107	SAPC110450905026NB60	C1	104.5	90.5	26	107.4
108	SAPF101050090026NB60	F1	105	90	26	107.3
109	SAPF101060965136NB60	F1	106.6	96.5	13.6	109.7
110	SAPF101060965136SI60	F1	106.6	96.5	13.6	109.7
111	SAPC210660965136NB60	C2	106.6	96.5	13.6	109.7
112	SAPF110790092254	F1	107.9	92	25.4	-
113	SAPC201080089294NB60	C2	108	89	29.4	112.97
114	SAPC210850090032NB60	C2	108.5	90	32	112.9
115	SAPC101080088024NB60	C1	108	88	24	111.5
116	SAPF101090092022NB60	F1	109	92	22	113.8
117	SAPC201090092022NB60	C2	109	92	22	113.8
118	SAPC110950905032HN60	C1	109.5	90.5	32	114
119	SAPF110950905032NB60	F1	109.5	90.5	32	113.4
120	SAPF110950905032	F1	109.5	90.5	32	-
121	SAPC110950905032NB60	C1	109.5	90.5	32	114
122	SAPC210950905032FP60	C2	109.5	90.5	32	114
123	SAPC201090092022NB70	C2	109	92	22	113.8
124	SAPC101110095024NB60	C1	111	95	24	115.6



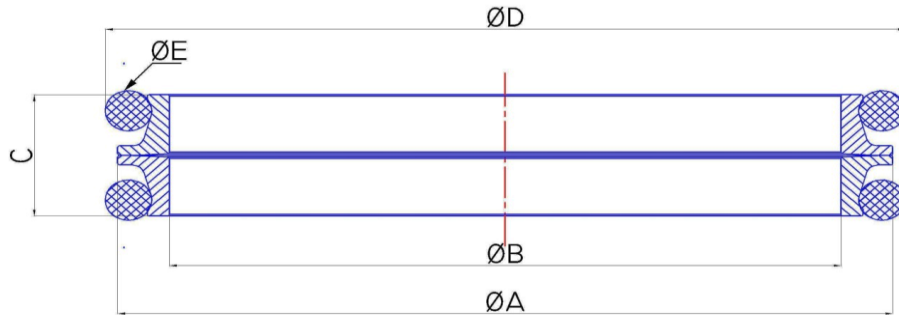
Sr. No.	REF. SAP PART NO.	SEAL MATERIAL	Ø A (OD)	Ø B (ID)	C (TOTAL METAL SEAL WIDTH)	Ø D (AFTER FITTMENT)
125	SAPC201110095024FP60	C2	111	95	24	115.6
126	SAPC201110095024NB60	C2	111	95	24	115.6
127	SAPC201110095024	C2	111	95	24	-
128	SAPF1L11150875019NB60	F1	111.5	87.5	19	115.8
129	SAPF1L01120094024NB60	F1	112	94	24	125.8
130	SAPF1L01120094228NB60	F1	112	94	22.8	125.8
131	SAPC2L01120094228NB60	C2	112	94	22.8	125.8
132	SAPC101160097032HN60	C1	116	97	32	121.3
133	SAPC101160097032NB60	C1	116	97	32	121.3
134	SAPC101160097032HN60 LT	C1	116	97	32	121.3
135	SAPC101170103020NB60	C1	117	103	20	119.8
136	SAPF101170104022NB60	F1	117	104	22	121
137	SAPF101170104022HN60	F1	117	104	22	121
138	SAPC201170104022NB60	C2	117	104	22	121.3
139	SAPC201170104021NB70 1D	C2	117	104	21	121.8
140	SAPF101190100032NB60	F1	119	100	32	123.5
141	SAPF101190100032	F1	119	100	32	-
142	SAPF101190100032HN85	F1	119	100	32	123.5
143	SAPC101190100032NB60	C1	119	100	32	123.5
144	SAPC101190100032HN60	C1	119	100	32	123.5
145	SAPC201190100032NB60	C2	119	100	32	123.5
146	SAPC101200099028HN60	C1	120	99	28	123.5
147	SAPC101200099028NB60	C1	120	99	28	123.5
148	SAPC1L01200094025NB60	C1	120	94	25	125.8
149	SAPC1L01200094025FP60	C1	120	94	25	125.8
150	SAPS1L01200094025NB60 LT	S1	120	94	25	125.8
151	SAPF101220102334NB60	F1	122	102	33.4	127
152	SAPC112251046225NB60	C1	122.5	104.63	22.5	125.5
153	SAPF1L01230099019NB60	F1	123	99	19	127.3
154	SAPC2L01230099019NB60	C2	123	99	19	127.3
155	SAPC101250104028NB60	C1	125	104	28	128.5
156	SAPC101250107024NB60	C1	125	107	24	130.4
157	SAPC101250107024HN60 LT	C1	125	107	24	130.4



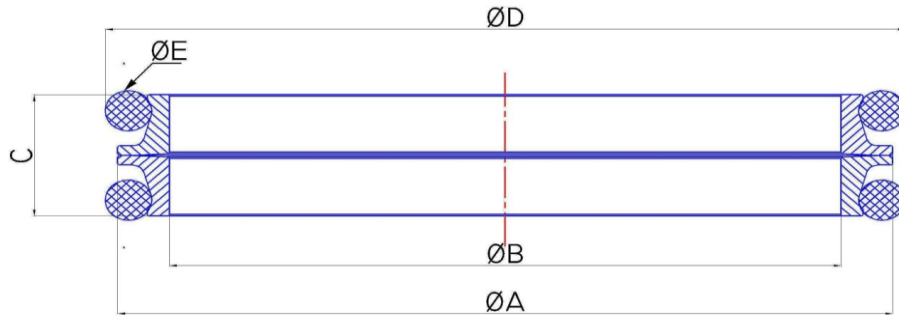
Sr. No.	REF. SAP PART NO.	SEAL MATERIAL	Ø A (OD)	Ø B (ID)	C (TOTAL METAL SEAL WIDTH)	Ø D (AFTER FITMENT)
158	SAPC501250107024FP60	C5	125	107	24	130.4
159	SAPF101280110032NB60	F1	128	110	32	133
160	SAPF101280111022NB60	F1	128	111	22	132.8
161	SAPC101280111022NB60	C1	128	111	22	132.5
162	SAPC101291145021HN60	C1	129	114.5	21	134.4
163	SAPC101291145021NB60	C1	129	114.5	21	134.4
164	SAPF101291145021NB60	F1	129	114.5	21	134.4
165	SAPC213151115030	C2	131.5	111.5	30	-
166	SAPC213151115030NB60 F	C2	131.5	111.5	30	137
167	SAPC401310112033NB60	C4	131	112	33	136
168	SAPF101320109032NB60	F1	132	109	32	137.2
169	SAPC101320109032NB60	C1	132	109	32	137
170	SAPC301321095016	C3	132	109.5	32	-
171	SAPF101330111032NB60	F1	133	111	32	137.6
172	SAPF113750114031NB60	F1	137.5	114	31	143
173	SAPF113750115031NB60	F1	137.5	115	31	142
174	SAPC113750115031NB60	C1	137.5	115	31	143
175	SAPC201370115031NB60 1C	C2	137	115	31	141.5
176	SAPC101380118032NB60	C1	138	118	32	142.7
177	SAPC101380120032NB60	C1	138	120	32	143
178	SAPC113951185028NB60	C1	139.5	118.5	28	143
179	SAPC114070127025NB60	C1	140.7	127	25	144
180	SAPF101410124022NB60	F1	141	124	22	146.4
181	SAPC101410124022NB60	C1	141	124	22	146.4
182	SAPC101410124029NB60	C1	141	124	29	144
183	SAPF101410127025NB60	F1	141.2	127	25.4	143.8
184	SAPC101410127029HN60	C1	141	127	29	144
185	SAPC201410127029FP60	C2	141	127	29	144
186	SAPC201410127029	C2	141	127	29	-
187	SAPC101410127029NB60	C1	141	127	29	144
188	SAPF101410127029NB60	F1	141	127	29	144
189	SAPF101410127029NB60 SD1	F1	141	127	29	148
190	SAPF101410127029NB60 SD2	F1	141	127	29	148.2



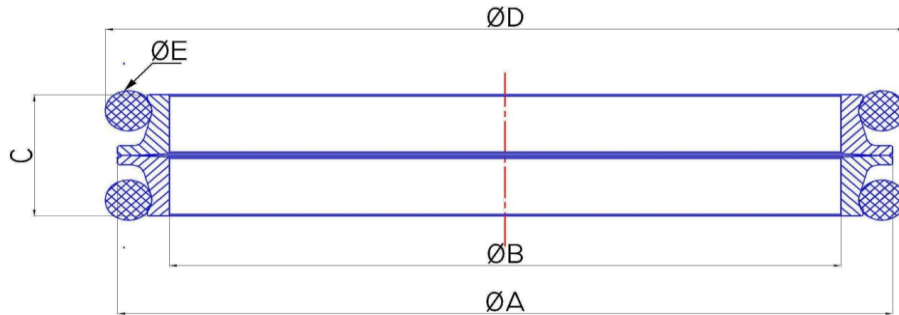
Sr. No.	REF. SAP PART NO.	SEAL MATERIAL	Ø A (OD)	Ø B (ID)	C (TOTAL METAL SEAL WIDTH)	Ø D (AFTER FITMENT)
191	SAPC101420120038NB60	C1	142	120	38	149
192	SAPC101440125318NB60	C1	144	125	31.8	148.5
193	SAPF101460127032NB60	F1	146	127	32	151
194	SAPF101460127032	F1	146	127	32	-
195	SAPC101460127032NB60	C1	146	127	32	151
196	SAPF101500130032NB60	F1	150	130	32	155.6
197	SAPC101500130032NB60	C1	150	130	32	155.6
198	SAPC201510130032NB60 1C	C2	151	130	32	156
199	SAPF101510130032NB60	F1	151	130	32	155.6
200	SAPC115451355028NB60	C1	154.5	135.5	28	158.3
201	SAPC515451355028FP60	C5	154.5	135.5	28	158.3
202	SAPC115451355028HN60 LT	C1	154.5	135.5	28	158.3
203	SAPF101570142028NB60	F1	157	142	28	160
204	SAPC101570143027NB60	C1	157	143	27	160
205	SAPC101571413254NB60	C1	157	141.3	25.4	159.7
206	SAPF101571427254NB60	F1	157	142.7	25.4	159.7
207	SAPC101600143027NB60	C1	160	143	27	164
208	SAPF101600143027NB60	F1	160	143	27	164
209	SAPC101670150028NB60	C1	167	150	28	171.8
210	SAPF101670150028NB60	F1	167	150	28	171.8
211	SAPC101680155024NB60 Version 2	C1	168	155	13.5 (SINGLE WIDTH)	170.8
	SAPC101680155024NB60 Version 2	C1	168	155	10.5 (SINGLE WIDTH)	145.4
212	SAPF101680154027NB60	F1	168	154	27	171
213	SAPF101680154027SI60	F1	168	154	27	171
214	SAPC101680154027NB60	C1	168	154	27	171
215	SAPC101680154027SI60	C1	168	154	27	171
216	SAPC101680154027HN60	C1	168	154	27	171
217	SAPC101680154027SI65 RB	C1	168	154	27	171
218	SAPC101680154027NB60 LT	C1	168	154	27	171
219	SAPC101690154022NB60	C1	169	154	22	174.5
220	SAPF101690154022NB60	F1	169	154	22	174.5
221	SAPC101700154021NB60	C1	170	154	21	175.6
222	SAPC201710150032NB60	C2	171	150	32	175.5



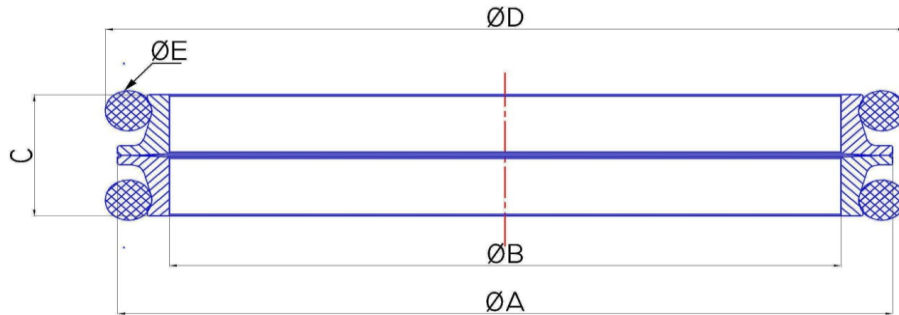
Sr. No.	REF. SAP PART NO.	SEAL MATERIAL	Ø A (OD)	Ø B (ID)	C (TOTAL METAL SEAL WIDTH)	Ø D (AFTER FITTMENT)
223	SAPC117150153028NB60	C1	171.5	153	28	176.3
224	SAPF117150153028NB60	F1	171.5	153	28	176.3
225	SAPF117171463038NB60	F1	171.7	146.3	38	176.8
226	SAPC117171465038NB60	C1	171.7	146.5	38	177.2
227	SAPF101720150040NB60	F1	172	150	40	179.3
228	SAPC101720150/159233 (Version 2)	C1	172	159	13.25 (SINGLE WIDTH)	-
	SAPC101720150/159233 (Version 2)	C1	172	150	10 (SINGLE WIDTH)	-
229	SAPC117350154032NB60	C1	173.5	154	32	178
230	SAPF117350154032HN60	F1	173.5	154	32	178
231	SAPC1L01750150030NB60	C1	175	150	30	190
232	SAPC201800160032NB60	C2	180	160	32	186.3
233	SAPC118050165027NB60	C1	180.5	165	27	185.3
234	SAPF118050165027NB60	F1	180.5	165	27	185.3
235	SAPC518050165027FP60	C5	180.5	165	27	185.3
236	SAPC101890164030NB60	C1	189	164	30	193.5
237	SAPF101901725025NB60	F1	190	172.5	25	193
238	SAPF101910163038NB60	F1	191	163	38	196.5
239	SAPC101910163038NB60	C1	191	163	38	196.5
240	SAPC101910163038HN60	C1	191	163	38	196.5
241	SAPC101910163038FP60	C1	191	163	38	196.5
242	SAPF101910163046NB60	F1	191	163	46	196.8
243	SAPC101950176028NB60	C1	195	176	28	200.1
244	SAPF1L01950169033NB60	F1	195	169	33	205
245	SAPC219740180214NB60	C2	197.4	180	21.4	202.5
246	SAPF119740180214NB60	F1	197.4	180	21.4	202.5
247	SAPC101990178032SI60	C1	199	178	32	203.6
248	SAPC101990178032NB60	C1	199	178	32	203.6
249	SAPF101991775032	F1	199	177.5	32	-
250	SAPC202000180294NB60 F	C2	200	180	29.4	204
251	SAPC102000177030NB60	C1	200	177	30	204.5
252	SAPC102000177030HN60	C1	200	177	30	204.5
253	SAPC102020183028NB60	C1	202	183	28	206
254	SAPF102030186254NB60	F1	203	186	25.4	205.7



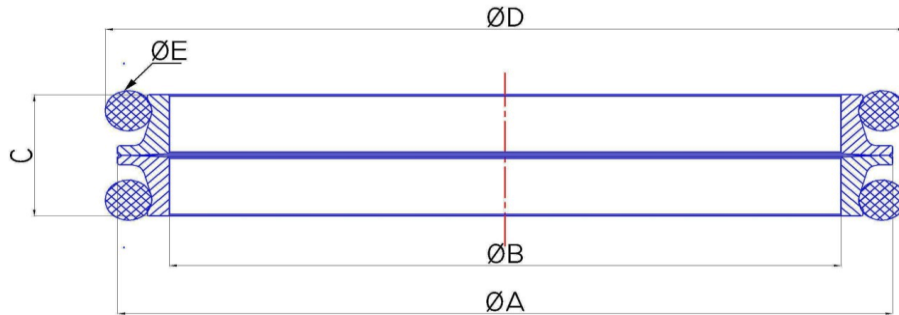
Sr. No.	REF. SAP PART NO.	SEAL MATERIAL	Ø A (OD)	Ø B (ID)	C (TOTAL METAL SEAL WIDTH)	Ø D (AFTER FITTMENT)
255	SAPC102050178038NB60	C1	205	178	38	210.9
256	SAPC102090192030NB60	C1	209	192	30	213.5
257	SAPF102100182038NB60	F1	210	182	38	215.5
258	SAPC121031823038NB60	C1	210.3	182.3	38	215.8
259	SAPC221050182038FP60	C2	210	182	38	215.8
260	SAPC221050182038NB60	C2	210	182	38	215.8
261	SAPC102100182046NB60	C1	210	182	46	215.4
262	SAPF102100185038NB60	F1	210	185	38	215.4
263	SAPC202100185038	C2	210	185	38	-
264	SAPC102100191028NB60	C1	210	191	28	214
265	SAPC102100191028HN60 VERSION 2	C1	210	191	28	214
266	SAPC102100191007	C1	210	191	7 (SINGLE WIDTH)	-
267	SAPF102100191028NB60	F1	210	191	28	214.2
268	SAPF102150192033NB60	F1	215	192	33	221.2
269	SAPC102150192034NB60	C1	215	192	34	221.2
270	SAPC121650195318NB60	C1	216.5	195	31.8	221
271	SAPC1L02180192032NB60	C1	218	192	32	231
272	SAPC1L02220194034NB60	C1	222	194	34	238.8
273	SAPC122282087026SI60	C1	222.8	208.7	26	225.4
274	SAPC122282087026SI60 BG	C1	222.8	208.7	26	225.4
275	SAPC122282087026NB60	C1	222.8	208.7	26	225.4
276	SAPF122282087026SI60	F1	222.8	208.7	26	225.4
277	SAPF122282087026NB60	F1	222.8	208.7	26	225.4
278	SAPF122280202026NB60	F1	222.8	202	26	225.2
279	SAPF102270205305NB60	F1	227	205	30.5	231.5
280	SAPF102270205305NB60 SB	F1	227	205	30.5	231.5
281	SAPF102270205303NB60 SD	F1	227	205	30	231.5
282	SAPF102270205303HN60 PD	F1	227	205	30	231.5
283	SAPF102270205305HN60	F1	227	205	30.5	231.5
284	SAPF102270202030SI60	F1	227	202	30	231.5
285	SAPC102270205303NB60	C1	227	205	30	231.5
286	SAPC102270205303SI60	C1	227	205	30	231.5
287	SAPC102270205303HN60	C1	227	205	30	231.5



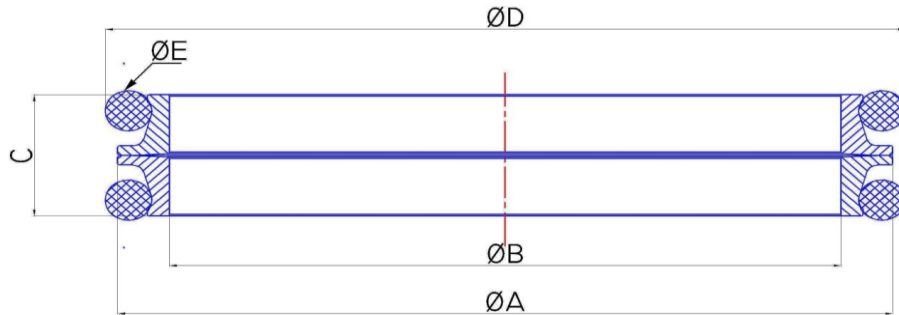
Sr. No.	REF. SAP PART NO.	SEAL MATERIAL	Ø A (OD)	Ø B (ID)	C (TOTAL METAL SEAL WIDTH)	Ø D (AFTER FITMENT)
288	SAPC202270205030SI60-R	C2	227	205	30	231.5
289	SAPC202270205030SIG60-R2	C2	227	205	30	231.5
290	SAPC202270205030NB60	C2	227	205	30	231.5
291	SAPC202270205030SIG60	C2	227	205	30	231.5
292	SAPC202270205030NB60 PD	C2	227	205	30	231.5
293	SAPF122850200038NB60	F1	228.5	200	38	234.86
294	SAPC222850200038FP60	C2	228.5	200	38	234.86
295	SAPC222850200038NB60	C2	228.5	200	38	233.8
296	SAPC122850200038NB60	C1	228.5	200	38	233.5
297	SAPC122850200038HN60	C1	228.5	200	38	233.5
298	SAPC122850200038SI60 BG	C1	228.5	200	38	233.5
299	SAPF122952155027NB60	F1	229.5	215.5	27	235.5
300	SAPF102340209042NB60	F1	234	209	42	242.8
301	SAPC102340209042NB60	C1	234	209	42	242.8
302	SAPC1L02380201036NB60	C1	238	201	36	254
303	SAPC1L02382135027NB60	C1	238	213.5	27	254
304	SAPC123950220318NB60	C1	239.5	220	31.8	244
305	SAPC123950220318SI60	C1	239.5	220	31.8	244
306	SAPF102410220025NB60	F1	241.4	220	25	244.7
307	SAPC102410220025NB60	C1	241.4	220	25	244.7
308	SAPC102410220025NB60 SD	C1	241.4	220	25	244.7
309	SAPF102460220041NB60	F1	246	220	41	256
310	SAPC1L02490215036NB60	C1	249	215	36	255.57
311	SAPF125142235038NB60	F1	251.4	223.5	38	256.5
312	SAPC125150223038NB60	C1	251.5	223	38	256.5
313	SAPC125150223038HN60	C1	251.5	223	38	256.5
314	SAPC125150223038NB60 LT	C1	251.5	223	38	256.5
315	SAPC125150223038SI60	C1	251.5	223	38	256.5
316	SAPC125150223046NB60	C1	251.5	223	46	256.6
317	SAPC202522255038NB60 1C	C2	252	225.5	38	258.5
318	SAPF125962316038NB60	F1	259.6	231.6	38	264.8
319	SAPC125970235038HN60	C1	259.7	235	38	264.7
320	SAPC125970231038FP60	C1	259.7	231	38	264.7



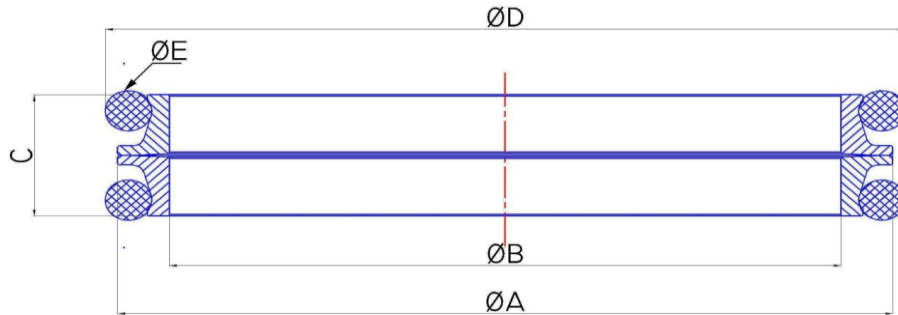
Sr. No.	REF. SAP PART NO.	SEAL MATERIAL	Ø A (OD)	Ø B (ID)	C (TOTAL METAL SEAL WIDTH)	Ø D (AFTER FITMENT)
321	SAPC126280240038NB60	C1	262.8	240	38	273.5
322	SAPC126280240038HN60	C1	262.8	240	38	273.5
323	SAPF1L02640239038NB60	F1	264	239	38	279.4
324	SAPC126470237384SI70 INVERTED	C1	264.7	237	38.4	-
325	SAPC126470237384SI60 INVERTED	C1	264.7	237	38.4	-
326	SAPF102680239042NB60	F1	268	239	42	274.2
327	SAPC102680239042NB60	C1	268	239	42	274.2
328	SAPC102680239042NB60 VERSION 2	C1	268	239	21 (SINGLE WIDTH)	274.2
	SAPC102680239042NB60 VERSION 2	C1	272.5	248	12.8 (SINGLE WIDTH)	-
329	SAPC102700250030FP60	C1	270	250	30	274.7
330	SAPF102700250030NB60	F1	270	250	30	274.7
331	SAPC1L02732416368	C1	273.2	241.6	36.8	-
332	SAPC602740236042HN60	C6	274	236	42	279.1
333	SAPF102760250044NB60	F1	276	250	44	285
334	SAPC102760250044NB60	C1	276	250	44	285
335	SAPC128050252038NB60	C1	280.5	252	38	285.5
336	SAPF128050252038NB60	F1	280.5	252	38	285.5
337	SAPC102880262040NB60	C1	288	262	40	295
338	SAPC102880262040HN60	C1	288	262	40	295
339	SAPC102930265046NB60	C1	293	265	46	297.8
340	SAPF102930265038NB60	F1	293	265	38	298
341	SAPF102930265038NB60 SD	F1	293	265	38	298
342	SAPC102930265038NB60	C1	293	265	38	298
343	SAPC102930265038FP60	C1	293	265	38	298
344	SAPC102930265038HN60	C1	293	265	38	298
345	SAPF103030275038NB60	F1	303	275	38	308
346	SAPC103030275038SI60	C1	303	275	38	308
347	SAPC103030275038NB60	C1	303	275	38	308
348	SAPF103250300038NB60	F1	325	300	38	335.5
349	SAPC103250300038NB60	C1	325	300	38	335.5
350	SAPF103273035038NB60	F1	327	303.5	38	333.5
351	SAPC103273035038NB60	C1	327	303.5	38	333.5
352	SAPF103282995040NB60	F1	328	299.5	40	333



Sr. No.	REF. SAP PART NO.	SEAL MATERIAL	Ø A (OD)	Ø B (ID)	C (TOTAL METAL SEAL WIDTH)	Ø D (AFTER FITMENT)
353	SAPC103280300040NB60	C1	328	300	40	333
354	SAPC303280298040NB60 1C	C3	328	298	40	333
355	SAPC103280298040NB60 1C	C1	328	298	40	333
356	SAPF103410318038NB60	F1	341	318	38	351.5
357	SAPC103410318038NB60	C1	341	318	38	351.5
358	SAPC103410318038HN60	C1	341	318	38	351.5
359	SAPC103410318038HN60 A VERSION	C1	341	318	38	351.5
360	SAPC103430318038NB60	C1	343	318	38	351.5
361	SAPF134643185038NB60	F1	346.4	318.5	38	351.5
362	SAPC103460318038HN60	C1	346	318	38	351.5
363	SAPC103460318038NB60	C1	346	318	38	351.5
364	SAPC103460318046NB60	C1	346	318	46	351.5
365	SAPC103460318046SI60	C1	346	318	46	351.5
366	SAPC134653222038SI60	C1	346.5	322.2	38	351.5
367	SAPC1L03530319036NB50	C1	353	319	36	365.1
368	SAPC1L35250320036NB50 SD	C1	352.5	320	36	365.1
369	SAPC103540326030NB60	C1	354	326	30	358.7
370	SAPF103680340040NB60	F1	368	340	40	374.8
371	SAPC136850340038NB60	C1	368.5	340	38	374.8
372	SAPC136850340038HN60	C1	368.5	340	38	374.8
373	SAPC303700340040NB60 1C	C3	370	340	40	374.4
374	SAPC103700340040NB60 1C	C1	370	340	40	374.4
375	SAPC103750350038FP60	C1	375	350	38	385.5
376	SAPC103750350038NB60	C1	375	350	38	385.5
377	SAPC103750350038HN60	C1	375	350	38	385.5
378	SAPC103750355038SI60	C1	375	355	38	385.5
379	SAPF103750350038NB60	F1	375	350	38	385.5
380	SAPC1L03923545038NB50	C1	392	354.5	38	401.75
381	SAPF1L03923545038NB50	F1	392	354.5	38	401.8
382	SAPC103940366038NB60	C1	394.4	366	38	399.5
383	SAPC103940366038SI60	C1	394	366	38	399.5
384	SAPC103940366038HN60	C1	394	366	38	399.5
385	SAPC103940366038FP60	C1	394	366	38	399.5



Sr. No.	REF. SAP PART NO.	SEAL MATERIAL	Ø A (OD)	Ø B (ID)	C (TOTAL METAL SEAL WIDTH)	Ø D (AFTER FITMENT)
386	SAPC103940366038FP70	C1	394	366	38	399.5
387	SAPF103940369038SI60	F1	394	369	38	399.5
388	SAPF103940369038NB60 LT	F1	394	369	38	399.5
389	SAPF103940369038NB60	F1	394	369	38	399.5
390	SAPF103940369038HN60	F1	394	369	38	399.5
391	SAPF103980370038NB60	F1	398	370	38	403.5
392	SAPF103980370038SI60	F1	398	370	38	403.5
393	SAPC104050382040NB60	C1	405	382	40	412.8
394	SAPC104050382040SI60	C1	405	382	40	412.8
395	SAPC104050382040HN60	C1	405	382	40	412.8
396	SAPF104050382040NB60	F1	405	382	40	412
397	SAPC1L04140378042FP60	C1	414	378	42	424.1
398	SAPC104150388038NB60	C1	415	388	38	420.6
399	SAPC104150388038NB60 LT	C1	415	388	38	420.6
400	SAPC104150388038FP60	C1	415	388	38	420.6
401	SAPC104270400038SI60	C1	427	400	38	432.5
402	SAPC104570430038NB60	C1	457	430	38	462.3
403	SAPC104570430038FP60	C1	457	430	38	462.3
404	SAPC104570430038SI60	C1	457	430	38	462.3
405	SAPC145844293038SI60	C1	458.4	429.3	38	462.3
406	SAPC104590430038SI60	C1	459	430	38	464.5
407	SAPC104800450050NB60	C1	480	450	50	492.2
408	SAPC148264546040SI60	C1	482.6	454.6	40	486.8
409	SAPF104950465436NB60	F1	495	465	43.6	500.7
410	SAPC105000470050NB60	C1	500	470	50	512.2
411	SAPF105330505436SI60	F1	533.4	505	43.6	538.4
412	SAPC105330505436NB60	C1	533.4	505	43.6	538.5
413	SAPC105330505436FP70	C1	533.4	505	43.6	538.5
414	SAPC105330505436FP60	C1	533.4	505	43.6	538.5
415	SAPC105330505436HN60	C1	533.4	505	43.6	538.5
416	SAPC105330505436SI60	C1	533.4	505	43.6	538.5
417	SAPC105480508060NB60	C1	548	508	60	554
418	SAPC105480508060SI60	C1	548	508	60	554



Sr. No.	REF. SAP PART NO.	SEAL MATERIAL	Ø A (OD)	Ø B (ID)	C (TOTAL METAL SEAL WIDTH)	Ø D (AFTER FITMENT)
419	SAPC105480508060HN60	C1	548	508	60	554
420	SAPF105600530050NB60	F1	560	530	50	572.2
421	SAPC105600530050NB60	C1	560	530	50	572.2
422	SAPC105600530050HN60	C1	560	530	50	572.2
423	SAPC105600530050SI60	C1	560	530	50	572.2
424	SAPC156790540436SI60	C1	567.9	540	43.6	573.06
425	SAPC1L05700542035FP60	C1	570	542	35	580.4
426	SAPC106230591050HN60	C1	623	591	50	635.2
427	SAPC106230591050NB60	C1	623	591	50	635.2
428	SAPC106280596050NB60	C1	628	596	50	640.2
429	SAPC106280596050HN60	C1	628	596	50	640.2
430	SAPC106950660053NB60	C1	695	660	53	705.3
431	SAPC107000667436NB60	C1	700	667	43.6	705.6
432	SAPC107000667436SI60	C1	700	667	43.6	705.6
433	SAPC107000667050HN60 LT	C1	700	667	50	705.6
434	SAPC180677737044SI60	C1	806.7	773.7	44	811.8
435	SAPC108650817466NB60	C1	865	817	46.6	870.6
436	SAPC108650817466SI60	C1	865	817	46.6	870.6
437	SAPC108650825048HN60 LT	C1	865	825	48	870.6
438	SAPC108650825048SI60	C1	865	825	48	870.6
439	SAPC110851030080NB60	C1	1085	1030	80	1090.9
440	SAPC111051047080NB60	C1	1105	1047	80	1110.9
441	SAPF111051047080NB60	F1	1105	1047	80	1110.9

ALL DIMENSIONS ARE IN MM.

NOTE

This list is only for refernce.

Owing to the contineous improvements to accomodate various application engineering requirements, the product designs and materials are subject to change without any prior notice, hence please check with SAP Parts, for the latest updates and right solution for your application need.

It is advicable for users to contact SAP Parts on sales@sapparts.com for any query about selection of Mechanical Face Seal exactly matching to the intened application/s.