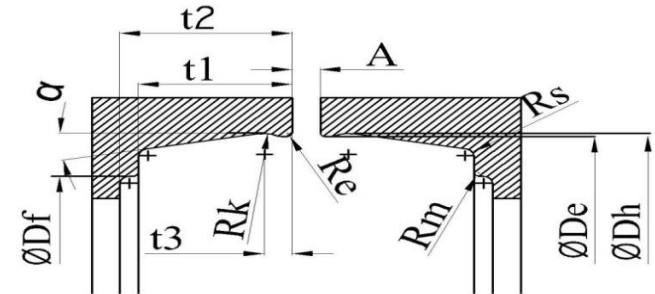
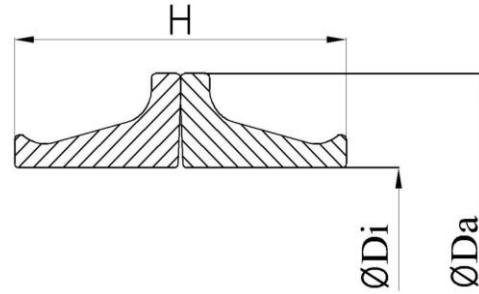


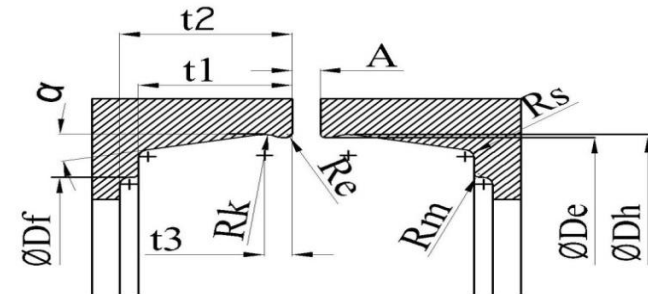
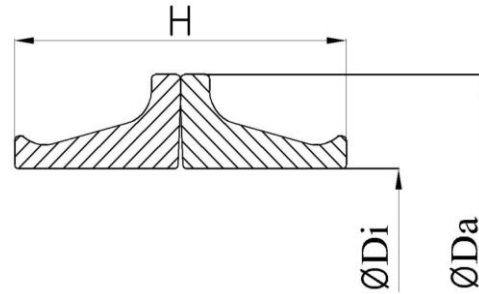
**List of DO Type Seals
(Cast Iron Version)**

SR.No.	SAP PART No.	A	Øda	Ødi	H	Ødh *	Øde *	Ødf	t1	t2 min	t3	RE	RK	RS	α
1	SAPCI00510038020NB60	3	51	38	20	53.7	53	46	9	11	1.8	0.5	2	1	10°
2	SAPCI00510038020NB601	3	51	38	20	53.7	53	46	10	11.5	1.8	0.5	2	1	10°
3	SAPCI00580045021NB60	3	58	45	21	61.6	60.8	53.4	10	12	1.8	0.3	2.5	1	10°
4	SAPCI00590046020NB60	3	59	46	20	62.5	61.8	56	8.5	10.5	1.8	0.5	2	1	10°
5	SAPCI06220048025NB60	3	62.15	48	25	68	67.2	58	12	14	2	0.4	3	1	10°
6	SAPCI00700555022NB60	3	70	55.5	22	73.8	73.1	65.5	10	11.5	2.4	0.5	5	1	10°
7	SAPCI00700555022NB601	3	70	55.5	22	73.8	73.1	65.5	10	11.5	2.4	0.5	5	1	10°
8	SAPCI00700555022NB602	3	70	55.5	22	74.8	74.1	65.5	10	11.5	2.4	0.5	5	1	10°
9	SAPCI00700555022NB603	3	70	55.5	22	73.8	73.1	65.5	10	11.5	2.4	0.5	5	1	10°
10	SAPCI00730602020NB60	3	73	60.2	20	76.5	75.8	69	8.5	10.5	1.8	0.5	2	1	10°
11	SAPCI00780064025NB60	3	78	64	25	84.6	83.8	74	12.5	14.5	2	0.4	3	1	12°
12	SAPCI00800067020NB60	3	80	67	20	83.4	82.7	76.8	8.5	10.5	1.8	0.5	2	1	10°
13	SAPCI08050063026NB60	3	80.5	63	26	84	83.2	72	11.5	13	2.5	0.5	5	1	10°
14	SAPCI08240635032NB60	3	82.4	63.5	32	87	86	74.5	14.5	17.5	2.8	0.5	5	1	10°
15	SAPCI00840071020NB60	3	84	71	20	87.4	86.7	80.8	8.5	10.5	1.8	0.5	2	1	10°
16	SAPCI08650675318NB60	3	86.5	67.5	31.8	91	90	78	14.5	17	2.8	0.5	5	1	10°
17	SAPCI00890685024NB60	3	89	68.5	24	92.5	91.5	83	11	13.5	2.8	0.5	5	1	10°
18	SAPCI00920073032NB60	3	92	73	32	96.5	95.5	84	14.5	17.5	2.8	0.5	5	1	10°
19	SAPCI09250795020NB60	3	92.5	79.5	20	96	95.3	88	8.5	10.5	1.8	0.5	2	1	10°
20	SAPCI00980081028NB60	3	98	81	28	102.3	101.3	91	12.5	14.5	2.8	0.5	5	1	10°
21	SAPCI01000079030NB60	3	100	79	30	105.2	104.2	92	15	17	2.5	0.7	3	1	10°



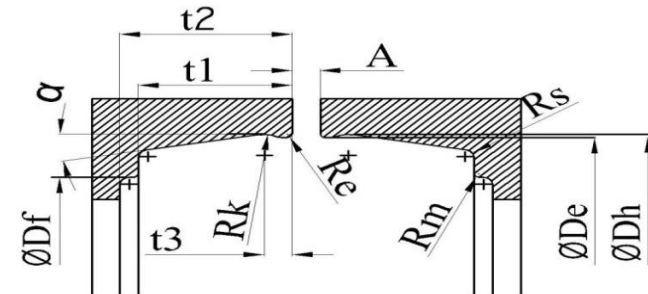
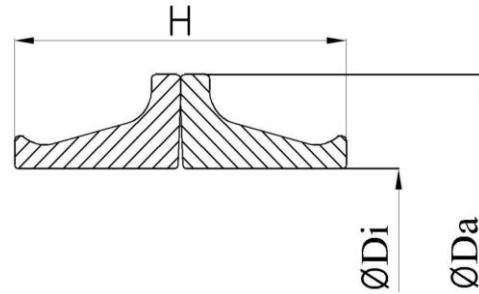
**List of DO Type Seals
(Cast Iron Version)**

SR.No.	SAP PART No.	A	Øda	Ødi	H	Ødh *	Øde *	Ødf	t1	t2 min	t3	RE	RK	RS	α
22	SAPC101000080029NB60	3	100	80	29	104	103.2	92	14.5	16.5	2	0.4	3	1	10°
23	SAPC101020083028NB60	3	102	83	28	105.5	104.5	94	12.5	15	2.8	0.5	5	1	10°
24	SAPC110450905026NB60	3	104.5	90.5	26	107.4	106.6	100.4	11.8	14.2	2.9	1.2	2.8	1	10°
25	SAPC101080088024NB60	3	108	88	24	111.5	110.5	102	1	13.5	2.8	0.5	5	1	10°
26	SAPC110950905032NB60	3	109.5	90.5	32	114	113	101.5	14.5	17.5	2.8	0.5	5	1	10°
27	SAPC101100091032NB60	3	110	91	32	114	113	101.5	14.5	17.5	2.8	0.5	5	1	10°
28	SAPC101110962024NB60	3	111	96.2	24	115.6	114.8	108	11	12.5	1.8	0.5	2	1	10°
29	SAPC101160097032NB60	3	116	97	32	120.5	119.5	108	14.5	17.5	2.8	0.5	5	1	10°
30	SAPC101170103020NB60	3	117	103	20	119.8	119	112.5	9	11	1.8	0.5	2	1	10°
31	SAPC101190100032NB60	3	119	100	32	123.5	122.5	111	14.5	17.5	2.8	0.5	5	1	10°
32	SAPC101200099028NB60	3	120	99	28	123.5	122.5	112	12.5	14.5	2.8	0.5	5	1	10°
33	SAPC101230107023NB60	3	123	107	23	125.5	125.1	117.5	9.5	11.5	1.8	0.7	3	1	10°
34	SAPC101250104028NB60	3	125	104	28	128.5	127.5	117	12.5	14	2.8	0.5	5	1	10°
35	SAPC101250107024NB60	3	125	107	24	130.4	129.4	119.5	11	13.5	2.8	0.5	5	1	10°
36	SAPC101280110032NB60	3	128	110	32	133	132	121	15	17	2.5	0.7	3	1	12°
37	SAPC101291145021NB60	3	129	114.5	21	134.1	133.1	126	9.2	10	2.3	0.5	3	1	10°
38	SAPC101380120032NB60	3	138	120	32	143	142	132	14.5	17	2.8	0.5	5	1	10°
39	SAPC101380120032NB601	3	138	120	32	142.5	141.5	132	14.5	17	2.8	0.5	5	1	10°
40	SAPC101390120318NB60	3	139	120	31.8	143.8	142.8	132	14.5	17	2.8	0.5	5	1	10°
41	SAPC113951185028NB60	3	139.5	118.5	28	143	142	131.5	12.5	15	2.8	0.5	5	1	10°
42	SAPC101400117029NB60	3	140	117	29	142.5	141.5	132	13	14	2.8	0.5	5	1	10°



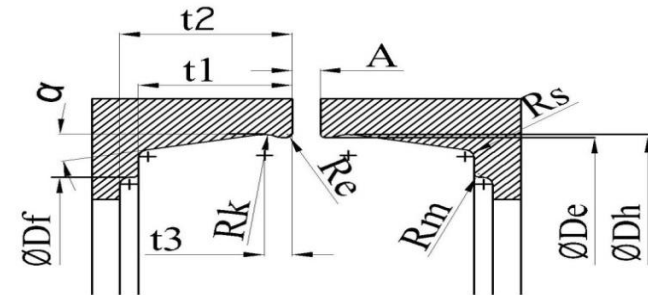
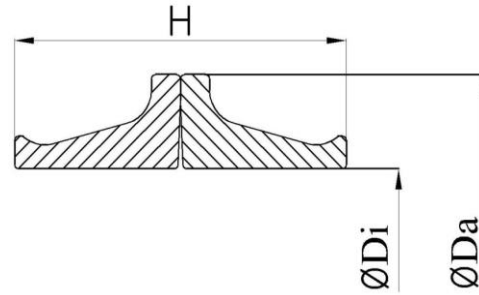
**List of DO Type Seals
(Cast Iron Version)**

SR.No.	SAP PART No.	A	Øda	Ødi	H	Ødh *	Øde *	Ødf	t1	t2 min	t3	RE	RK	RS	α
43	SAPC114070127025NB60	3	140.7	127	25	144	143.2	135	12.7	15.2	2.7	1	2.8	1	10°
44	SAPC101410127029NB60	3	141	127	29	144	143	136	12	14.5	2.3	0.5	3	1	10°
45	SAPC101410127029NB601	3	141	127	29	148	147	138	13	15.5	2.8	0.5	5	1	10°
46	SAPC101410127029NB602	3	141	127	29	148.2	147.2	135	13.2	15.5	2.8	0.5	5	1	10°
47	SAPC101420120038NB60	4	142	120	38	149	148	133	17	19	2.5	0.7	3	1	10°
48	SAPC101440125318NB60	3	144	125	31.8	148.5	147.5	136	14.5	17	2.8	0.5	5	1	10°
49	SAPC101460127032NB60	3	146	127	32	150.5	149.5	138	14.5	17.5	2.8	0.5	5	1	10°
50	SAPC101460127031NB60	3	146	127	31	150.2	149.4	137	14.5	16.5	2.6	0.5	5	1	10°
51	SAPC115451355028NB60	3	154.5	135.5	28	158.3	157.3	146.5	12.5	14	2.8	0.5	5	1	10°
52	SAPC101570143027NB60	3	157	143	27	160	159	152	12	14.5	2.3	0.5	3	1	10°
53	SAPC101600143027NB60	3	160	143	27	164	163	154	12	14.5	2.8	0.5	5	1	10°
54	SAPC101670150028NB60	3	167	150	28	17	170	160	13	15.5	2.8	0.5	5	1	10°
55	SAPC101680154027NB60	3	168	154	27	171	170	162.5	12	14.5	2.3	0.5	3	1	10°
56	SAPC101680154027NB601	3	168	154	27	171	170	163	12	14.5	2.3	0.5	3	1	10°
57	SAPC101690154022NB60	3	169	154	22	174.5	173.5	166	9.5	1	2.3	0.5	3	1	10°
58	SAPC101690154022NB601	3	169	154	22	174.5	173.5	166	9.2	1	2.3	0.5	3	1	10°
59	SAPC101700154021NB60	3	170	154	21	175.1	174.1	167	9.2	1	2.3	0.5	3	1	10°
60	SAPC117150153028NB60	3	171.5	153	28	176.3	175.3	164.5	12.5	14.5	2.8	0.5	5	1	10°
61	SAPC101710146038NB60	3	172	146	38	177	176	159	18	20.5	3.1	0.5	6.5	1	10°
62	SAPC101720150040NB60	4	172	150	40	179	178	165	18	20	2.5	0.7	3	1	10°
63	SAPC117350154032NB60	3	173.5	154	32	178	177	166	14.5	17	2.8	0.5	5	1	10°



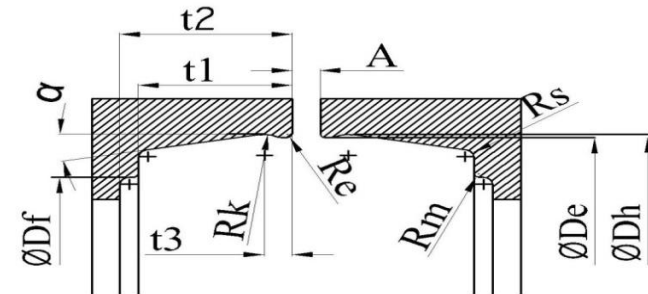
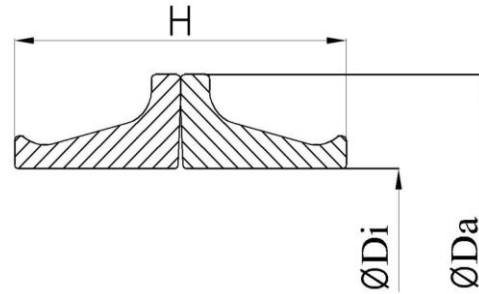
**List of DO Type Seals
(Cast Iron Version)**

SR.No.	SAP PART No.	A	Øda	Ødi	H	Ødh *	Øde *	Ødf	t1	t2 min	t3	RE	RK	RS	α
64	SAPC101800154038NB60	3	180	154	38	185	184	167	18	20.5	3.1	0.5	6.5	1	10°
65	SAPC118050165027NB60	3	180.5	165	27	185	184	176.5	12	14.5	2.3	0.5	3	1	10°
66	SAPC101890164030NB60	3	189	164	30	193.5	192.5	179	14.5	17	2.8	0.5	5	1	10°
67	SAPC119150163038NB60	3	191.5	163	38	196.5	195.5	178.5	18	20.5	3.1	0.5	6.5	1	10°
68	SAPC119440172318NB60	3	194.4	172	31.8	198.9	197.9	186	14.5	16.5	2.8	0.5	5	1	10°
69	SAPC101950176028NB60	3	195	176	28	199.8	198.8	188	12.5	14.5	2.8	0.5	5	1	10°
70	SAPC101990178032NB60	3	199	178	32	203.6	202.6	190	14.5	17	2.8	0.5	5	1	10°
71	SAPC102000177030NB60	3	200	177	30	204.5	203.5	19	14.5	17	2.8	0.5	5	1	10°
72	SAPC102050178038NB60	4	205	178	38	210.6	209.6	192	19	2	3	0.8	4	1	10°
73	SAPC102090192030NB60	3	209	192	30	213.5	212.5	200	14.5	17	2.8	0.5	5	1	10°
74	SAPC102100191028NB60	3	210	191	28	214	213	203	12.5	14.5	2.8	0.5	5	1	10°
75	SAPC121050182038NB60	3	210.5	182	38	215.5	214.5	197.5	18	20.5	3.1	0.5	6.5	1	10°
76	SAPC121650195318NB60	3	216.5	195	31.8	221	220	207	14.5	17	2.8	0.5	5	1	10°
77	SAPC122282087026NB60	3	222.8	208.7	26	225.4	224.4	217	11.5	13.5	2.2	0.5	2.5	1	10°
78	SAPC102270205030NB60	3	227	205	30	231.5	230.5	219	14.5	17	2.8	0.5	5	1	10°
79	SAPC122850200038NB60	3	228.5	200	38	233.5	232.5	215.5	18	20.5	3.1	0.5	6.5	1	10°
80	SAPC102370216030NB60	3	237	216	30	241.5	240.5	229	14.5	17	2.8	0.5	5	1	10°
81	SAPC123950220318NB60	3	239.5	220	31.8	244	243	232	14.5	16.5	2.8	0.5	5	1	10°
82	SAPC102410220025NB60	3	241.4	220	25	244.7	244	233.5	11	13.5	2.2	0.5	4	1	10°
83	SAPC125150223038NB60	3	251.5	223	38	256.5	255.5	238.5	18	20.5	3.1	0.5	6.5	1	10°
84	SAPC125970235038NB60	5	259.7	235	38	264.7	263.7	247	18	20.5	3.1	0.5	6.5	1	10°



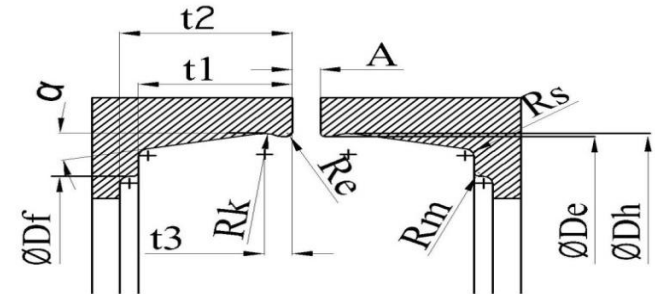
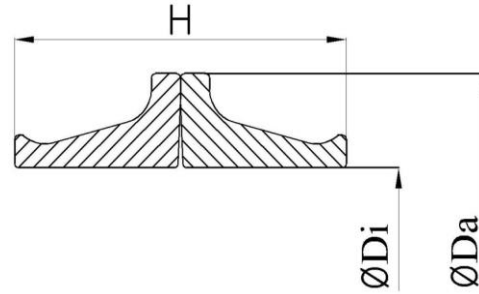
**List of DO Type Seals
(Cast Iron Version)**

SR.No.	SAP PART No.	A	Øda	Ødi	H	Ødh *	Øde *	Ødf	t1	t2 min	t3	RE	RK	RS	α
85	SAPC102610238318NB60	3	261	238	31.8	265.5	264.5	254	14.5	17	2.8	0.5	5	1	10°
86	SAPC126280240038NB60	3	262.8	240	38	273.5	272.5	255.5	18	20.5	3.1	0.5	6.5	1	10°
87	SAPC126280242040NB60	3	262.8	242	40	273.5	272.5	255.5	18	20.5	3.1	0.5	6.5	1	10°
88	SAPC102700250030NB60	3	270	250	30	274.7	273.7	262	14	15.5	2.8	0.5	5	1	10°
89	SAPC128050252038NB60	3	280.5	252	38	285.5	284.5	267.5	18	20.5	3.1	0.5	6.5	1	10°
90	SAPC102880262040NB60	7	288	262	40	294	293	276	17	20	3.8	1.2	6	3	10°
91	SAPC102930265038NB60	3	293	265	38	298	297	280	18	20.5	3.1	0.5	6.5	1	10°
92	SAPC103030275038NB60	3	303	275	38	308	307	290	18	20.5	3.1	0.5	6.5	1	10°
93	SAPC132470300038NB60	3	324.65	300	38	335.5	334.5	318	17.5	20.5	3.1	0.5	6.5	1	10°
94	SAPC103250300038NB60	3	325	300	38	336.5	335.5	318	17.5	20.5	3.1	0.5	6.5	1	10°
95	SAPC103280300038NB60	4	328	300	38	333	332	315	19.5	22	3.1	0.8	4	1	10°
96	SAPC103410318038NB60	3	341	318	38	351.5	350.5	334	17.5	20.5	3.1	0.5	6.5	1	10°
97	SAPC103460318038NB60	3	346	318	38	351.5	350.5	334	18	20.5	3.1	0.5	6.5	1	10°
98	SAPC103540326030NB60	3	354	326	30	358.7	357.7	346	15	16.5	2.8	0.5	5	1	10°
99	SAPC136850340038NB60	3	368.5	340	38	374.8	373.2	358	19	21.5	3	0.5	4	1	10°
100	SAPC103750350038NB60	3	375	350	38	385.5	384.5	368	17.5	20.5	3.1	0.5	6.5	1	10°
101	SAPC103750355038NB60	3	375	355	38	385.5	384.5	368	17.5	20.5	3.1	0.5	6.5	1	10°
102	SAPC139440366038NB60	3	394.4	366	38	399.5	398.6	381	17.5	20.5	3	0.5	6.5	1	10°
103	SAPC139440366040NB60	6	394.4	366	40	399.5	398.6	381	17.5	20.5	3	0.5	6.5	1	10°
104	SAPC103980370038NB60	3	398	370	38	403.5	402.6	385	17.5	20.5	3	0.5	6.5	1	10°
105	SAPC104050382040NB60	6	405	382	40	412	411	395	17	22	3.8	1.1	6	3	10°



**List of DO Type Seals
(Cast Iron Version)**

SR.No.	SAP PART No.	A	Øda	Ødi	H	Ødh *	Øde *	Ødf	t1	t2 min	t3	RE	RK	RS	α
106	SAPC104150388038NB60	3	415	388	38	420.3	419.4	402	17.5	20.5	3	0.5	6.5	1	10°
107	SAPC141620388038NB60	3	416.2	388	38	421.6	420.7	402	17.5	20.5	3	0.5	6.5	1	10°
108	SAPC104570430038NB60	3	457	430	38	462.3	461.3	444	17.5	20.5	3	0.5	6.5	1	10°
109	SAPC145920430038NB60	3	459.2	430	38	464.5	463.5	444	17.5	20.5	3	0.5	6.5	1	10°
110	SAPC104800450050NB60	3	480	450	50	492.2	490.2	470	23.5	25.5	4	0.5	6	1	10°
111	SAPC104950465436NB60	3	495	465	43.6	500.7	498.5	482.9	21.2	22.9	4.7	0.7	7	1	10°
112	SAPC149720465436NB60	3	497.2	465	43.6	503.1	500.9	482.9	21.2	23	4.7	0.7	7	1	10°
113	SAPC105000470050NB60	3	500	470	50	512.2	510.2	490	23.5	25.5	4	0.5	6	1	10°
114	SAPC153340505436NB60	6	533.4	505	43.6	538.4	537.4	521	19.7	21.7	4	1.3	6.5	1	10°
115	SAPC153580505436NB60	3	535.8	505	43.6	541.8	539.7	521	19.7	21.7	4.2	0.5	6.5	1	10°
116	SAPC105480508060NB60	15	548	508	60	553	551.5	528	22	26	5	1.1	9	3	10°
117	SAPC105600530050NB60	3	560	530	50	572.2	570.2	545	23.5	25.5	4	0.5	6	1	10°
118	SAPC156680538436NB60	6	566.8	538	43.6	572.2	571.2	554	19.7	21.7	4	0.5	6.5	1	10°
119	SAPC105900559050NB60	3	590	559	50	602.2	600.2	575	23.5	25.5	4	0.5	6	1	10°
120	SAPC106080576436NB60	6	608	576	43.6	613	612	569	19.7	21.7	4	0.5	6.5	1	10°
121	SAPC106085815436NB60	6	608	581.5	43.6	613	612	569	19.7	21.7	4	0.5	6.5	1	10°
122	SAPC106230591050NB60	5.25	623	591	50	635.2	633.2	613	23.5	25.5	4	0.5	6	1	10°
123	SAPC106280596050NB60	5.25	628	596	50	640.2	638.2	618	23.5	25.5	4	0.5	6	1	10°
124	SAPC106950660053NB60	13	695	660	53	705.3	703.3	680	20	25.5	4	0.5	6	1	10°
125	SAPC107000667436NB60	9	700	667	43.6	705.6	704.3	687	21.3	24	3.7	0.5	6.3	1	10°
126	SAPC107000667050NB60	12	700	667	50	705.6	704.7	687.7	21.3	26.2	3.7	0.5	6.3	1	10°

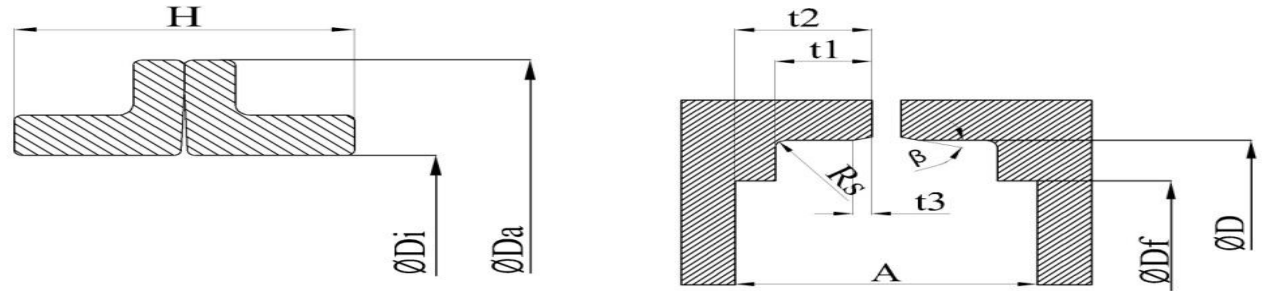


**List of DO Type Seals
(Cast Iron Version)**

SR.No.	SAP PART No.	A	Øda	Ødi	H	Ødh *	Øde *	Ødf	t1	t2 min	t3	RE	RK	RS	α
127	SAPC107500718050NB60	3	750	718	50	762.2	760.2	740	23.5	25.5	4	0.5	6	1	10°
128	SAPC108010740080NB60	17	801	740	80	816.9	815.9	784	34.5	39.5	4.4	0.5	10	1	10°
129	SAPC108260770080NB60	17	826	770	80	831.9	830.9	800	34.5	39.5	4.4	0.5	10	1	10°
130	SAPC108360780080NB60	17	836	780	80	841.9	840.9	810	34.5	39.5	4.4	0.5	10	1	10°
131	SAPC108650817466NB60	12	865	817	46.6	870.6	869.7	852.7	21.3	26.2	3.8	0.5	6.3	1	10°
132	SAPC186550825048NB60	11	865.5	825	48	870.6	869.7	852.7	18.4	23.3	3.7	0.5	6.3	1	10°
133	SAPC108860834080NB60	17	886	834	80	819.9	890.9	860	34.5	39.5	4.5	0.5	10	1	10°
134	SAPC109410902060NB60	16	941	902	60	946.3	945.2	922.4	23.8	25.2	4.65	0.5	8	1	10°
135	SAPC109510890080NB60	17	951	890	80	956.9	955.9	924	30	34	4.4	0.5	10	5	10°
136	SAPC109760920080NB60	17	976	920	80	981.9	980.9	950	34.5	39.5	4.4	0.5	10	1	10°
137	SAPC110851030080NB60	17	1085	1030	80	1090.9	1089.9	1058	34.5	39.5	4.4	0.5	10	1	10°
138	SAPC111051044080NB60	17	1105	1044	80	1110.9	1109.9	1078	34.5	39.5	4.4	0.5	10	1	10°
139	SAPC112361175080NB60	26	1236	1175	80	1241.9	1240.4	1209	32.5	37.5	4.4	0.5	10	1	10°
140	SAPC114251372080NB60	26	1425	1372	80	1430.9	1429.9	1398	32.5	37.5	4.4	0.5	10	1	10°

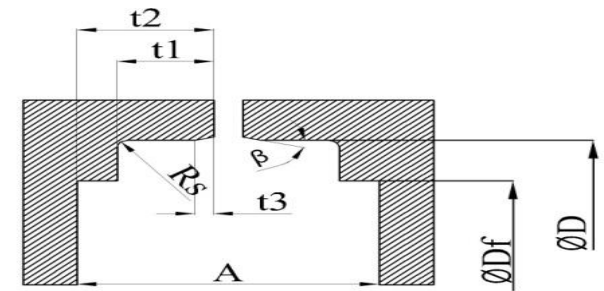
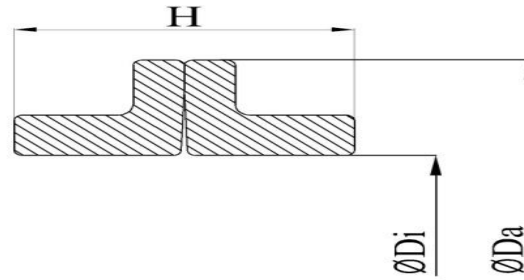
Note:-

- 1) All Dimensions are in mm.
- 2) O-ring material can be customised



**List of DF Type Seals
(Cast Iron Version)**

SR.No.	SAP PARTS NO.	A	Ø D _a	Ø D _i [mm]	H	Ø d	Ø df	t1	t2	t3	RS	β
1	SAPC1L62500485256NB60	22.7	62.5	48.5	25.6	76.3	62.9	10.6	14	1.6	1	30°
2	SAPC1L00650045022NB60	24.7	65	45	22	70.1	58	11.5	12.1	1.5	1	30°
3	SAPC1L00760056021NB60	22.9	76	56	21	82.6	70.1	10.6	11.7	1	1	30°
4	SAPC1L00800060024NB60	28	80	60	24	85	70	10.5	10.5	1	1	30°
5	SAPC1L00900076017NB60	18	90	76	17	95	83	8	9.5	1	1	30°
6	SAPC1L00930735020NB60	23.3	93	73.5	20	102.4	88.4	10.8	11.2	1	1	30°
7	SAPC1L01040088019NB60	20	104	88	19	113	98	8	9.5	1	1	20°
8	SAPC1L01200094025NB60	27.8	120	94	25	125.8	109.1	13	13.6	1.5	1	30°
9	SAPC1L01410115028NB60	33.5	141	115	28	152.4	131.4	15.9	15.9	1.5	1	30°
10	SAPC1L01580132031NB60	34	158	132	31	171.5	151.8	15.4	15.9	1.5	1.5	30°
11	SAPC1L01611425024NB60	27.7	161	142.5	24	173	139.7	11.1	11.3	1.5	1	30°
12	SAPC1L01720148029NB60	34.7	172	148	29	184.5	164.7	16.5	16.5	1.5	1.5	30°
13	SAPC1L02180192032NB60	32.2	218	192	32	231	206	15.2	17.1	1	1.5	30°
14	SAPC1L02380201036NB60	44.5	238	201	36	254	235.5	21.2	21.2	1	1.5	30°
15	SAPC1L02382135274NB60	32	238	213.5	27.4	254	240	13.7	13.7	1.5	1	30°
16	SAPC1L02640239034NB60	36.5	264	239	34	279.4	261.9	17.5	18.2	1.6	1	45°
17	SAPC1L02650225040NB60	48.9	265	225	40	277.1	247.8	23.7	23.7	1.5	1.5	30°
18	SAPC1L02652357030NB60	33.8	265	235.7	30	273.1	230	15.6	15.7	1.5	1	30°



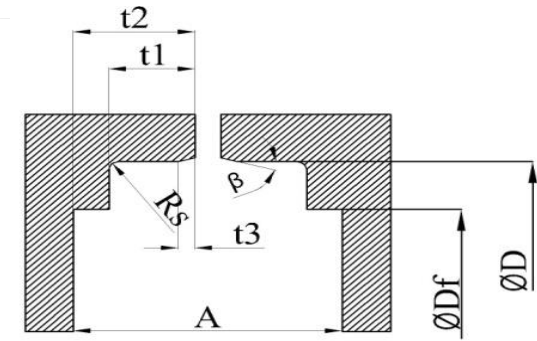
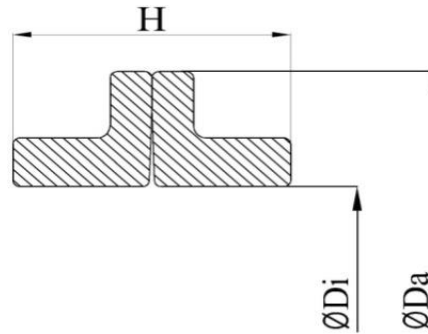
**List of DF Type Seals
(Cast Iron Version)**

SR.No.	SAP PARTS NO.	A	Ø D _a	Ø D _i [mm]	H	Ø d	Ø df	t1	t2	t3	RS	β
19	SAPC1L02820256030NB60	32.8	282	256	30	292.1	276.2	15.6	16.2	1.5	1	30°
20	SAPC1L03190283034NB60	39.1	319	283	34	329.4	307.3	18.5	18.5	1.5	1	45°
21	SAPC1L03530319036NB60	42.1	353	319	36	365.1	343.7	20	20	1.6	1.5	30°

Note:-

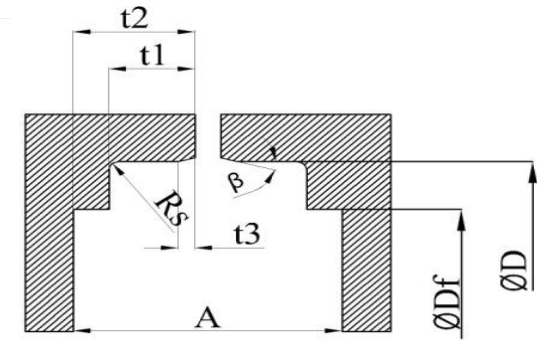
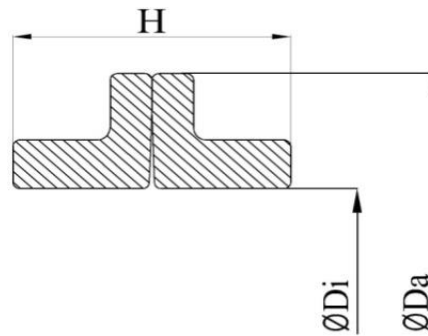
Dimensions are in mm.

Material can be customised



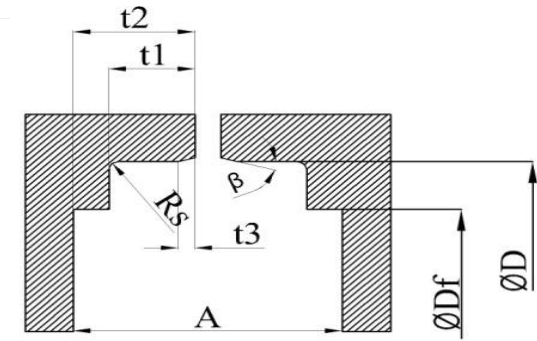
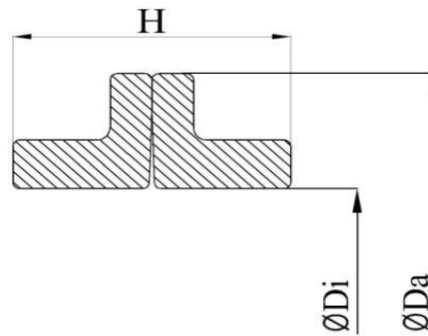
**List of DF Type Seals
(Steel Version)**

SR.No.	SAP PARTS NO.	A	Ø D _a	Ø D _i [mm]	H	Ø d	Ø df	t1	t2	t3	RS	β
	SAP PARTS PART NO.	TSS Part No	Da	Di	L	D	D1	L2	L1			
1	SAPF1L00590042020NB60	23	59	42	20	65	53	10	8	2	1	15°
2	SAPF1L00620047020NB60	23	62	47	20	70	58	10	8	2	1	15°
3	SAPF1L00650505019NB60	22.5	65	50.5	19	76.2	63	10	8	2	1	15°
4	SAPF1L00730054022NB60	26	73	54	22	80	67	11.5	10	1.5	1	15°
5	SAPF1L00730585019NB60	23	73	58.5	19	82.5	65	10	8	2	1	15°
6	SAPF1L00800586196NB60	21	80	58.6	19.6	84	71	9	7.5	1.5	1	15°
7	SAPF1L00810635019NB60	21	81	63.5	19	87.8	71	9	8	1	1	15°
8	SAPF1L08620067020NB60	23	86.2	67	20	95.4	82	10	8	2	1	15°
9	SAPF1L08620068020NB60	24	86.2	68	20	95.6	82	10	8	2	1	15°
10	SAPF1L00870067025NB60	28	87	67	25	95	81	12.5	11	1.5	1	15°
11	SAPF1L09170067020NB60	23.5	91.7	67	20	95.4	82	10	8	2	1	15°
12	SAPF1L09280738020NB60	23	92.8	73.8	20	102.2	88	10	8	2	1	15°
13	SAPF1L00970077025NB60	28	97	77	25	105	87	12.5	11	1.5	1	15°
14	SAPF1L00990074020NB60	24	99	74	20	102.2	88	10	8	2	1	15°
15	SAPF1L01000825022NB60	25	100	82.5	22	114.3	97	11	9	2	1	15°



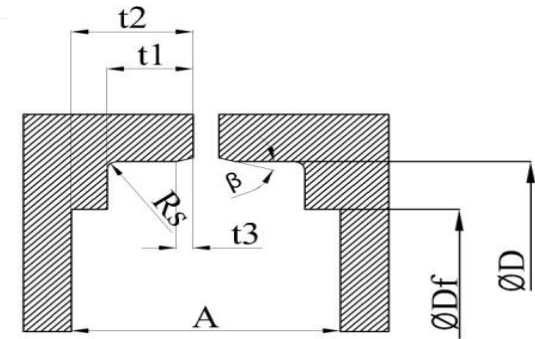
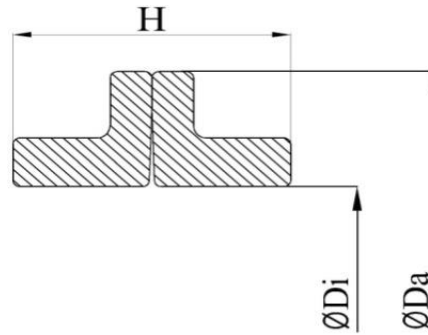
**List of DF Type Seals
(Steel Version)**

SR.No.	SAP PARTS NO.	A	Ø D _a	Ø D _i [mm]	H	Ø d	Ø df	t1	t2	t3	RS	β
16	SAPF1L10150817020NB60	23.5	101.5	81.7	20	110.2	96	10	8	2	1	15°
17	SAPF1L01090875175NB60	20	109	87.5	17.5	113	100	8.5	7	1.5	1	15°
18	SAPF1L11150875019NB60	23	111.5	87.5	19	115.8	102	10	8.5	1.5	1	15°
19	SAPF1L11250094024NB60	28	112.5	94	24	125.8	109	12.5	10	2.5	1	15°
20	SAPF1L01130092024NB60	28	113	92	24	125.8	109	12.5	10	2.5	1	15°
21	SAPF1L01200099175NB60	20	120	99	17.5	124	110	8.5	7	1.5	1	15°
22	SAPF1L01230099019NB60	23	123	99	19	127.3	113	10	7	3	1	15°
23	SAPF1L01240105244NB60	30.6	124	105	24.4	134.9	125	13.3	12	1.3	1	15°
24	SAPF1L01260104024NB60	27	126	104	24	135	114	12	10	2	1	15°
25	SAPF1L13320114026NB60	28	133.2	114	26	147.9	130	12	10.5	1.5	1	15°
26	SAPF1L01380114026NB60	28	138	114	26	148	126	12	10	2	1	15°
27	SAPF1L01440124032NB60	40	144	124	32	162.5	141.5	18.5	17	1.5	1	15°
28	SAPF1L01560133028NB60	32.5	156	133	28	171.5	151	13	11	2	1	15°
29	SAPF1L01681485324NB60	38	168	148.5	32.4	184.1	164	16.5	15	1.5	1	15°



**List of DF Type Seals
(Steel Version)**

SR.No.	SAP PARTS NO.	A	Ø D _a	Ø D _i [mm]	H	Ø d	Ø df	t1	t2	t3	RS	β
30	SAPF1L01750150030NB60	35	175	150	30	190	170	15	13	2	1	15°
31	SAPF1L01800154036NB60	41.3	180	154	36	194	174	18.4	17	1.4	1	15°
32	SAPF1L01800158018NB60	22	180	158	18	190	174	8	7	1	1	15°
33	SAPF1L01950169033NB60	35.2	195	169	33	206.2	191.5	15.1	14	1.1	1	15°
34	SAPF1L02071777029NB60	33.2	207	177.7	29	218.9	197	16.6	15	1.6	1	15°
35	SAPF1L21430193031NB60	41.8	214.3	193	31	238.9	215	19.4	18	1.4	1	15°
36	SAPF1L21450194031NB60	40.2	214.5	194	31	238.8	214	20.1	19	1.1	1	15°
37	SAPF1L02240198035NB60	40	224	198	35	245	223	17	15	2	1	15°
38	SAPF1L02590233035NB60	38	259	233	35	280	250	17	15	2	1	15°
39	SAPF1L26050228041NB60	53	260.5	228	41	277.1	247.5	23.5	22	1.5	1	15°
40	SAPF1L27352415036NB60	37	273.5	241.5	36	279.4	260.6	17.5	16.5	1	1	15°
41	SAPF1L03030275036NB60	37	303	275	36	309.4	290	17.5	16.5	1	1	15°
42	SAPF1L03050283042NB60	40	305	283	42	329.4	307	18.5	17	1.5	1	15°
43	SAPF1L35250320040NB60	42	352.5	320	40	365.1	343	20	18.5	1.5	1	15°

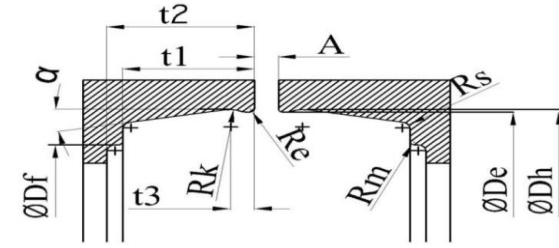
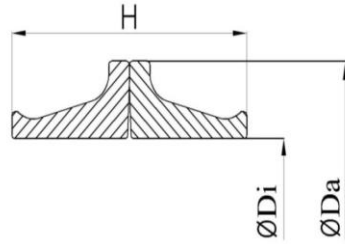


**List of DF Type Seals
(Steel Version)**

SR.No.	SAP PARTS NO.	A	Ø D _a	Ø D _i [mm]	H	Ø d	Ø df	t1	t2	t3	RS	β
44	SAPF1L03920355396NB60	47.8	392	355	39.6	401.7	380	23	21.5	1.5	1	15°
45	SAPF1L04700442041NB60	39.3	470	442	41	488.7	467	18.4	17	1.4	1	15°
46	SAPF1L05300492043NB60	41.8	530	492	43	546.1	532	19.9	18.4	1.5	1	15°

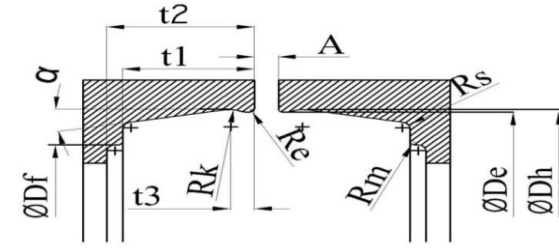
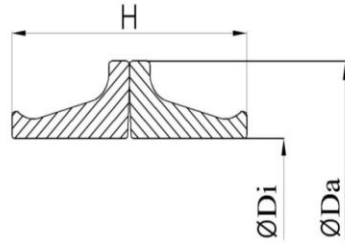
Note:-

- 1) All Dimensions are in mm.
- 2) O-ring material can be customised



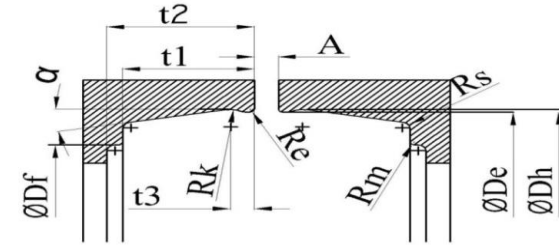
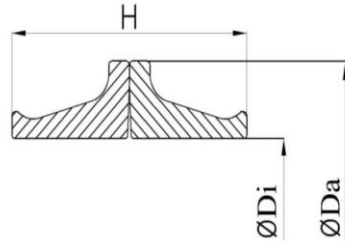
**List of DO Type Seals
(Steel Version)**

SR.No.	SAP PART No.	A	Øda	Ødi	H	Ødh *	Øde *	Ødf	t1	t2 min	t3	RE	RK	RS	α
1	SAPF100450034014NB60	1.5	45	34	14	47	46.5	42	6.5		1	0.5	1	1	10°
2	SAPF100500039014NB60	1.5	50	39	14	52	51.5	46	6.5	8	1	0.5	1	1	10°
3	SAPF100510038204NB60	3	51	38	20.4	53.7	53	46	9	11	1.8	0.5	2	1	10°
4	SAPF100520040020NB60	3	52	40	20	55	54.2	46	9	11	1	0.5	1	1	10°
5	SAPF100580043024NB60	3	58	43	24	61.6	60.8	53.4	10	12	1.8	0.5	2.5	1	10°
6	SAPF100580045216NB60	3	58	45	21.6	61.6	61	54	10.5	12.5	1.8	0.5	2.5	1	10°
7	SAPF100580048144NB60	1.5	58	48	14.4	59.9	59.4	55	6.3	8	1.5	0.5	1.7	1	10°
8	SAPF100590046020NB60	3	59	46	20	61.6	61.2	53	9	11	2	0.5	2.5	1	10°
9	SAPF100620048026NB60	3	62	48	26	68	67.2	58	12	14	2	0.5	3	1	10°
10	SAPF100700555022NB60	3	70	55.5	22	73.8	73.1	65.5	10	11.5	2.4	0.5	5	1	10°
11	SAPF100700056026NB60	3	70	56	26	76	75.2	66	12	14	2	0.5	2.5	1	10°
12	SAPF100730061176NB60	3	73	61	17.6	75.8	75.5	66.8	6.5	7.5	1	0.5	1.4	1	10°
13	SAPF100740060206NB60	3	74	60	20.6	78.4	77.4	70	9	11	1.9	0.5	2.5	1	10°
14	SAPF100750058027NB60	3	75	58	27	79.2	78.6	66	12	14	2	0.5	2.5	1	10°
15	SAPF107750057356NB60		77.5	57	35.6	81.4	80.7	68.5	15.2	20.9	3.5	0.5	4.8	1	10°
16	SAPF100780064025NB60	3	78	64	25	84.6	83.8	74	12.5	14.5	2	0.5	3	1	10°
17	SAPF108250635318NB60	3	82.5	63.5	31.8	86.5	85.7	73.5	15.2	16.8	3.5	0.5	4.8	1	10°
18	SAPF100840069024NB60	3	84	69	24	89.6	88.6	78.5	11	13	1.9	0.5	3	1	10°
19	SAPF100840071020NB60	3	84	71	20	87.4	86.7	80.8	8.5	10	1.8	0.5	2	1	10°
20	SAPF108650675318NB60	3	86.5	67.5	31.8	91	90	78	14.5	17	2.8	0.5	5	1	10°
21	SAPF108650074225NB60	3	86.5	74	22.5	91.4	90.7	80	9.5	11.5	2	0.5	3	1	10°
22	SAPF108760775136NB60		87.6	77.5	13.6	90.7	90.2	89.5	7.5	8	1.4	0.5	1.5	1	10°
23	SAPF108850735204NB60	3	88.5	73.5	20.4	90.2	89.4	82	12.7	14.3	2.2	0.5	2.8	1	10°
24	SAPF100890069024NB60	3	89	69	24	92.5	91.5	83	11	13.5	2.8	0.5	5	1	10°



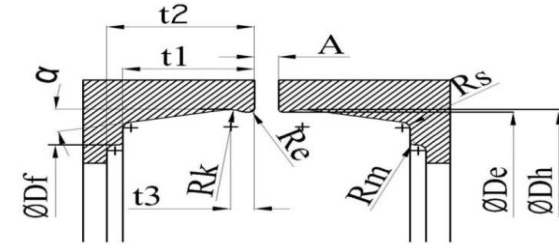
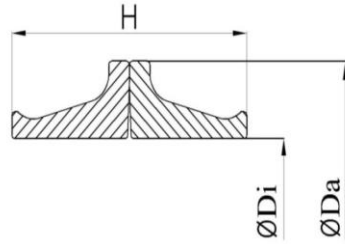
**List of DO Type Seals
(Steel Version)**

SR.No.	SAP PART No.	A	Øda	Ødi	H	Ødh *	Øde *	Ødf	t1	t2 min	t3	RE	RK	RS	α
25	SAPF100900070029NB60	3	90	70	29	95.5	94.7	84	13.5	15.5	2	0.5	3	1	10°
26	SAPF109190731318NB60	3	91.9	73.1	31.8	96	95.2	83	15.2	16.8	3.5	0.5	4.8	1	10°
27	SAPF100920725356NB60		92	72.5	35.6	96	95.2	83	15.2	20.9	3.5	0.5	4.8	1	10°
28	SAPF100920073318NB60	3	92	73	31.8	96.2	95.4	84	15	17	2.8	0.5	4	1	10°
29	SAPF109250795020NB60	3	92.5	79.5	20	96	95.3	88	8.5	10.5	1.8	0.5	2	1	10°
30	SAPF100940075029NB60	3	94	75	29	101.4	100.6	89	14.5	16.5	2	0.5	3	1	10°
31	SAPF100980081028NB60	3	98	81	28	102.3	101.3	91	12.5	14.5	2.8	0.5	5	1	10°
32	SAPF101000080030NB60	3	100	80	30	104.1	103.3	93	15	18	2.3	0.5	2.5	1	10°
33	SAPF101020825356NB60		102	82.5	35.6	107.3	106.5	94.3	15.2	20.9	3.5	0.5	4.8	1	10°
34	SAPF101050090026NB60	3	105	90	26	107.3	106.7	100.4	11.5	14	2.9	0.5	2.8	1	10°
35	SAPF110650094023NB60	3	106.5	94	23	111.6	110.8	102	9.5	11.5	2	0.5	3	1	10°
36	SAPF110680965136NB60	3	106.8	96.5	13.6	109.7	109.2	108.5	7.5	8	1.4	0.5	1.5	1	10°
37	SAPF101090090032NB60	3	109	90	32	112.5	111.7	104	14.5	17	3.2	0.5	3	1	10°
38	SAPF110940904318NB60	3	109.4	90.4	31.8	113.4	112.7	100.4	15.2	16.8	3.5	0.5	4.8	1	10°
39	SAPF110950904356NB60		109.5	90.4	35.6	113.4	112.7	100.4	15.2	20.9	3.5	0.5	4.8	1	10°
40	SAPF110950092022NB60	3	109.5	92	22	113.8	113	105	9.5	11.5	2	0.5	3	1	10°
41	SAPF101110095024NB60	3	111	95	24	115.6	114.8	108	11	12.5	1.8	0.5	2	1	10°
42	SAPF101140095032NB60	3	114	95	32	120	119.2	107	15	17	2.5	0.5	3	1	10°
43	SAPF101170104022NB60	3	117	104	22	121	120.2	107	9.5	11.5	2	0.5	3	1	10°
44	SAPF101190100318NB60	3	119	100	31.8	123	122.2	110	15.2	16.8	3.5	0.5	4.8	1	10°
45	SAPF101220103032NB60	3	122	103	32	127.2	126.2	115	15.5	17.5	2.5	0.5	3	1	10°
46	SAPF112250104225NB60	3	122.5	104	22.5	125.5	125.1	117.5	9.5	11.5	2	0.5	3	1	10°
47	SAPF101250104028NB60	3	125	104	28	128.5	127.5	117	12.5	14	2.8	0.5	5	1	10°
48	SAPF101250107024NB60	3	125	107	24	130.4	129.4	119.5	11	13.5	2.8	0.5	5	1	10°



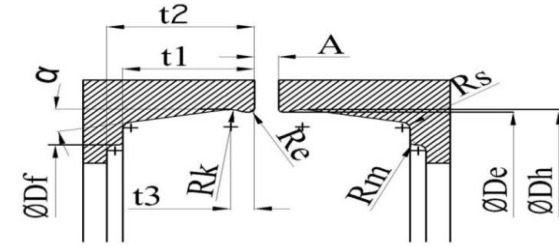
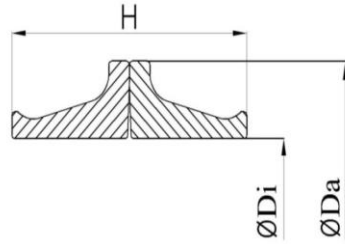
**List of DO Type Seals
(Steel Version)**

SR.No.	SAP PART No.	A	Øda	Ødi	H	Ødh *	Øde *	Ødf	t1	t2 min	t3	RE	RK	RS	α
49	SAPF101280110032NB60	3	128	110	32	133	132	121	14.5	17	2.5	0.5	3	1	10°
50	SAPF101280111022NB60	3	128	111	22	132.5	132	123	10.6	12.3	2.8	0.5	3	1	10°
51	SAPF101291145235NB60	3	129	114.5	23.5	134.1	133.1	126	10.4	11.9	2.8	0.5	5	1	10°
52	SAPF101320109032NB60	3	132	109	32	136.5	135.5	124	15.5	17.5	2.5	0.5	3	1	10°
53	SAPF101330111032NB60	5	133	111	32	137	136.5	124.5	14.5	18	2.8	0.5	5	1	10°
54	SAPF101370115031NB60	3	137	115	31	141.8	140.8	130	14.5	16.5	2.5	0.5	3	1	10°
55	SAPF101380117318NB60	3	138	117	31.8	142.5	141.5	132	14.5	17	2.8	0.5	5	1	10°
56	SAPF101390120318NB60	3	139	120	31.8	143	142	129.3	14.3	17.4	3	0.5	5.4	1	10°
57	SAPF101391265268NB60	3	139	126.5	26.8	143.8	143.1	136.9	11.8	14.2	2.9	0.5	2.8	1	10°
58	SAPF101400117028NB60	3	140	117	28	142.5	141.5	132	12.5	14	2.8	0.5	5	1	10°
59	SAPF101400119028NB60	3	140	119	28	142.5	141.5	132	12.5	14	2.8	0.5	5	1	10°
60	SAPF101410120318NB60	3	141	120	31.8	144	143	138	14.5	17.5	2.8	0.5	5	1	10°
61	SAPF101410124022NB60	3	141	124	22	146.4	145.3	136	10.6	12.3	2.8	0.5	3	1	10°
62	SAPF101410127029NB60	3	141	127	29	144	143	136	12	14.5	2.8	0.5	5	1	10°
63	SAPF114120127254NB60	3	141.2	127	25.4	143.8	143.1	136.9	11.8	14.2	2.9	0.5	2.8	1	10°
64	SAPF101420120038NB60	4	142	120	38	149	148	133	17	19	2.5	0.5	3	1	10°
65	SAPF114410125318NB60	3	144.1	125	31.8	148.5	147.5	136	14.3	17.4	3	0.5	5	1	10°
66	SAPF101460126318NB60	3	146	126	31.8	150	149.2	137	15.2	16.8	3.5	0.5	4.8	1	10°
67	SAPF101460127318NB60	4	146	127	31.8	150.5	149.5	138	14.5	17.5	2.8	0.5	5	1	10°
68	SAPF115050130032NB60	3	150.5	130	32	155.6	154.6	144	14.5	16.5	2.5	0.5	5	1	10°
69	SAPF101520130385NB60		152	130	38.5	159	158	144	18.5	20.5	2.5	0.5	3	1	10°
70	SAPF115691427254NB60	3	156.9	142.7	25.4	159.7	158.9	152.1	11.8	14.2	2.9	0.5	2.8	1	10°
71	SAPF101570144026NB60	3	157	144	26	160	159	154.5	12	14.5	2.8	0.5	5	1	10°
72	SAPF101600143027NB60	4	160	143	27	164	163	154	12	14.5	2.8	0.5	5	1	10°



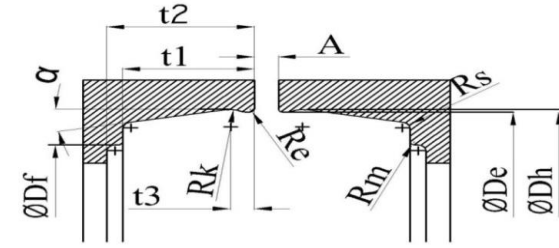
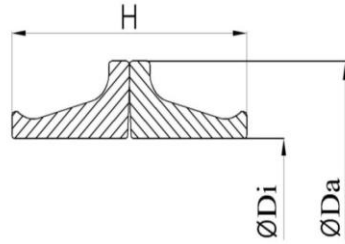
**List of DO Type Seals
(Steel Version)**

SR.No.	SAP PART No.	A	Øda	Ødi	H	Ødh *	Øde *	Ødf	t1	t2 min	t3	RE	RK	RS	α
73	SAPF101670147028NB60	3	167	147	28	171	170	160	13	15.5	2.8	0.5	5	1	10°
74	SAPF101680146038NB60	4	168	146	38	176.8	175.9	159	18	20.5	3	0.5	6.5	1	10°
75	SAPF101680154027NB60	3	168	154	27	171	170	162.5	12	14.5	2.3	0.5	3	1	10°
76	SAPF116811539254NB60	3	168.1	153.9	25.4	171	170.2	164	11.8	14.2	2.9	0.5	2.8	1	10°
77	SAPF101690154022NB60	3	169	154	22	174.5	173.5	166	9.2	11	2.3	0.5	3	1	10°
78	SAPF101700148031NB60	4	170	148	31	175.6	174.6	164	15	17	2.5	0.5	3	1	10°
79	SAPF101700154021NB60	3	170	154	21	175.1	174.1	167	9.2	10	2.3	0.5	3	1	10°
80	SAPF117150152032NB60		171.5	152	32	175.4	174.7	162.5	15.2	16.8	3.5	0.5	4.8	1	10°
81	SAPF117150153028NB60	3	171.5	153	28	176.3	175.3	164.5	12.5	14.5	2.8	0.5	5	1	10°
82	SAPF117171463038NB60		171.7	146.3	38	176.8	175.9	158.9	18.4	20.3	3.7	0.5	6.3	1	10°
83	SAPF101720150040NB60	4	172	150	40	179	178	165	18	20	2.5	0.5	2	1	10°
84	SAPF117350154032NB60	3	173.5	154	32	178	177	166	14.5	17	2.8	0.5	6.5	1	10°
85	SAPF101750146038NB60	6	175	146	38	180.5	179.5	162	17.7	20.5	3	0.5	6.3	1	10°
86	SAPF101810165027NB60	3	181	165	27	185	184	176.5	12	14.5	2.7	0.5	4	1	10°
87	SAPF101890164030NB60	3	189	164	30	193.5	192.5	179	14.5	17	2.8	0.5	5	1	10°
88	SAPF101901725254NB60	3	190	172.5	25.4	192.7	191.8	188	12.7	14.3	2.3	0.5	2.8	1	10°
89	SAPF101900174254NB60	3	190	174	25.4	192.7	191.8	188	12.7	14.3	2.3	0.5	2.8	1	10°
90	SAPF119121633038NB60	6	191.2	163.3	38	196.8	195.8	178.9	18.4	20.3	3.7	0.5	6.3	1	10°
91	SAPF119131633046NB60	6	191.3	163.3	46	196.8	195.9	178.9	18.4	24.1	3.7	0.5	6.3	1	10°
92	SAPF119740180214NB60	3	197.4	180	21.4	202.2	201.9	196	9.4	10.6	1.2	0.5	3	1	10°
93	SAPF101990178032NB60	3	199	178	32	203.6	202.4	190	23	16	3	0.5	5	1	10°
94	SAPF102000177031NB60	3	200	177	31	204.5	203.4	191	14.5	17	3.1	0.5	5	1	10°
95	SAPF102000178038NB60	4	200	178	38	210.6	209.6	192	19	21	3	0.5	4	1	10°
96	SAPF102020183028NB60	3	202	183	28	206	205	195	12.5	14.5	2.8	0.5	5	1	10°



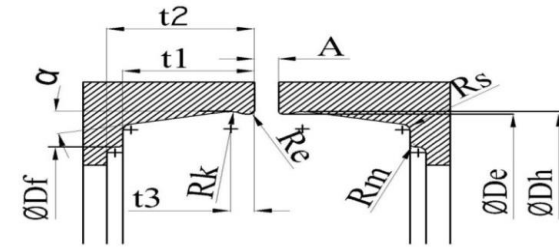
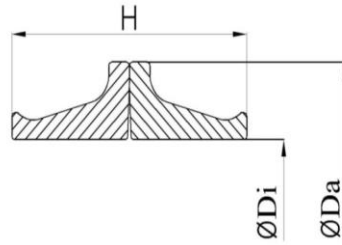
**List of DO Type Seals
(Steel Version)**

SR.No.	SAP PART No.	A	Øda	Ødi	H	Ødh *	Øde *	Ødf	t1	t2 min	t3	RE	RK	RS	α
97	SAPF102030186254NB60	3	203	186	25.4	205.7	204.9	190.5	14.5	16	2.3	0.5	2.8	1	10°
98	SAPF102100191028NB60	3	210	191	28	214	213	203	12.5	14.5	2.8	0.5	5	1	10°
99	SAPF121031823038NB60	6	210.3	182.3	38	215.4	214.4	197.5	18.4	20.3	3.7	0.5	6.3	1	10°
100	SAPF121031824046NB60	6	210.3	182.4	46	215.4	214.4	197.5	18.4	24.1	3.7	0.5	6.3	1	10°
101	SAPF102150192033NB60	4	215	192	33	220.8	219.8	207	16.5	18.5	3	0.5	4	1	10°
102	SAPF121650195032NB60	3	216.5	195	32	221	220	207	14.5	17	2.8	0.5	5	1	10°
103	SAPF122230202265NB60	3	222.3	202	26.5	224.9	224.1	217.9	11.8	14.2	2.9	0.5	2.8	1	10°
104	SAPF102270205030NB60	3	227	205	30	231.5	230.5	219	14.5	17	2.8	0.5	5	1	10°
105	SAPF122850200038NB60	6	228.5	200	38	233.5	232.5	215.5	18	20.5	3.1	0.5	6.3	1	10°
106	SAPF102340209042NB60	4	234	209	42	242.6	241.6	224	19.5	22.5	3	0.5	4	1	10°
107	SAPF123950220032NB60	3	239.5	220	32	244	243	232	14.5	16.5	2.8	0.5	5	1	10°
108	SAPF125142235038NB60	6	251.4	223.5	38	256.5	255.7	238.7	18.4	20.3	3.7	0.5	6.3	1	10°
109	SAPF125152235046NB60	6	251.5	223.5	46	256.6	255.7	238.7	18.4	24.1	3.7	0.5	6.3	1	10°
110	SAPF102520225038NB60	4	252	225	38	258	257	241	19	21	3	0.5	4	1	10°
111	SAPF125962316038NB60	6	259.6	231.6	38	264.7	263.8	247	18.4	20.5	3.7	0.5	6.3	1	10°
112	SAPF102610238032NB60	3	261	238	32	265.5	264.5	254	14.5	17	2.8	0.5	5	1	10°
113	SAPF126280240038NB60	3	262.8	240	38	273.5	272.5	255.5	18	20.5	3.1	0.5	6.5	1	10°
114	SAPF126450245032NB60	3	264.5	245	32	268.9	267.9	255	14.5	17	2.8	0.5	5	1	10°
115	SAPF102680239040NB60	4	268	239	40	274.2	273.2	257	20.5	22.5	3	0.5	4	1	10°
116	SAPF102760250044NB60	4	276	250	44	284.6	283.6	266	20.5	24	3	0.5	4	1	10°
117	SAPF102800252038NB60	3	280	252	38	285.5	284.5	265	18	20	3.1	0.5	6.5	1	10°
118	SAPF129280265046NB60	6	292.8	265	46	297.8	297	280	18.4	24.1	3.7	0.5	6.3	1	10°
119	SAPF102930265038NB60	4	293	265	38	298	297	280	18	20.5	3.1	0.5	6.3	1	10°
120	SAPF103030275038NB60	3	303	275	38	308	307	290	18	20.5	3.1	0.5	6.5	1	10°



**List of DO Type Seals
(Steel Version)**

SR.No.	SAP PART No.	A	Øda	Ødi	H	Ødh *	Øde *	Ødf	t1	t2 min	t3	RE	RK	RS	α
121	SAPF131082829038NB60	6	310.8	282.9	38	316.3	315.4	298.4	18.4	20.3	3.7	0.5	6.3	1	10°
122	SAPF103250300038NB60	3	325	300	38	335.5	334.5	318	17.5	20.5	3.1	0.5	6.5	1	10°
123	SAPF103280300040NB60	4	328	300	40	333	332	315	18.5	21	3	0.5	4	1	10°
124	SAPF103280301038NB60	6	328	301	38	333	332.1	315.1	18.4	20.3	3.7	0.5	6.3	1	10°
125	SAPF103410318038NB60	3	341	318	38	351.5	350.5	334	18	20.5	3.1	0.5	6.5	1	10°
126	SAPF134643185038NB60	6	346.4	318.5	38	351.6	350.7	333.7	18.4	20.3	3.7	0.5	6.3	1	10°
127	SAPF134650319046NB60	6	346.5	319	46	351.6	350.7	333.7	18.4	24.1	3.7	0.5	6.3	1	10°
128	SAPF103680340040NB60	3	368	340	40	374.8	373.8	358	19	21.5	3	0.5	4	1	10°
129	SAPF103693395040NB60	4	369	339.5	40	374.8	373.8	358	19	21.5	3	0.5	4	1	10°
130	SAPF103750350038NB60	3	375	350	38	385	384.5	368	17.5	20.5	3.1	0.5	6.5	1	10°
131	SAPF139443665038NB60	6	394.4	366.5	38	399.5	398.6	381.7	18.4	20.3	3.7	0.5	6.3	1	10°
132	SAPF139453665048NB60	6	394.5	366.5	48	399.5	398.6	381.7	18.4	24.1	3.7	0.5	6.3	1	10°
133	SAPF139453672038NB60	6	394.5	367.2	38	399.5	398.6	381.7	18.4	20.3	3.7	0.5	6.3	1	10°
134	SAPF103980370038NB60	3	398	370	38	403.5	402.6	385	17.5	20.5	3	0.5	6.5	1	10°
135	SAPF104053805040NB60	4	405	380.5	40	412.2	410.5	395	17	22	3	0.5	4	1	10°
136	SAPF104150387038NB60	3	415	387	38	420.3	419.3	402	17.5	20.5	3.1	0.5	6.5	1	10°
137	SAPF104544285037NB60	4	454	428.5	37	462.3	461.3	444.6	18.5	21	3	0.5	4	1	10°
138	SAPF145724292038NB60	6	457.2	429.2	38	462.3	461.4	444.4	18.4	20.3	3.7	0.5	6.3	1	10°
139	SAPF105000470050NB60	3	500	470	50	512.2	510.2	490	23.5	25.5	13	0.5	6	1	10°
140	SAPF153345054044NB60	6	533.4	505.4	44	538.5	537.6	520.6	21.3	26.2	3.7	0.5	6.3	1	10°
141	SAPF105600530050NB60	3	560	530	50	572.2	570.2	545	23.5	25.5	4	0.5	6	1	10°
142	SAPF106080580436NB60	6	608	580	43.6	613	611	596	19.7	21.7	4	0.5	6.5	1	10°
143	SAPF106230591050NB60	5	623	591	50	635.2	632.1	613	23.5	25.5	4	0.5	6	1	10°



**List of DO Type Seals
(Steel Version)**

SR.No.	SAP PART No.	A	Øda	Ødi	H	Ødh *	Øde *	Ødf	t1	t2 min	t3	RE	RK	RS	α
144	SAPF107000667044NB60	6	700	667	44	705.6	704.6	687.6	18.4	23.4	3.7	0.5	6.3	1	10°
145	SAPF107500710050NB60	3	750	710	50	762.2	760.2	740	23.5	25.5	4	0.5	6	1	10°
146	SAPF108860830080NB60	17	886	830	80	891.6	890.6	860	34.5	39.5	4.4	0.5	10	1	10°

Note:-

- 1) All Dimensions are in mm.
- 2) O-ring material can be customised